

VOLVO CONSTRUCTION EQUIPMENT MATRIS REPORT

Machine model L90G	SerialNo 617156	Operating Hours 6891.2	Reading Date 15/04/2019
Company name Arnold Machinery	Dealer arnold machinery	Report Issuer	
Contact name mike seifert	Technician CE Tech	Primary Application Light material handling	
Site	Workorder	Ground Condition	

MATRIS Reading, Summary / Recommendation



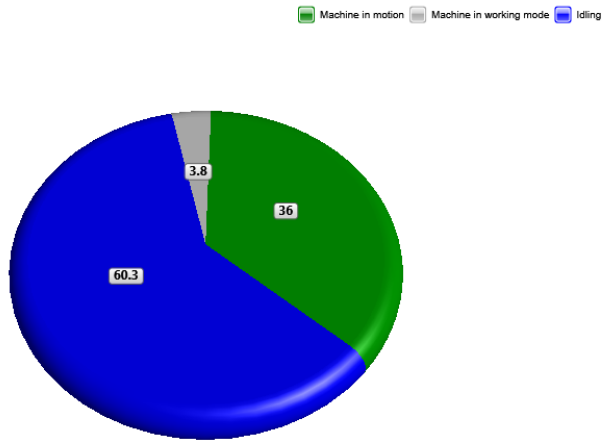
Machine model	SerialNo	Operating Hours	Reading Date
L90G	617156	6891.2	15/04/2019

Main equipment	Type	Equipment
	Tyre size/class	
	Main Attachment	
	Extra Counterweight	
	Ballast	
	Chains	
	Boom Suspension System	
	Attachment Interface	
	Volume m3 (yd3) / Area m2 (ft2)	
	Attachment make	



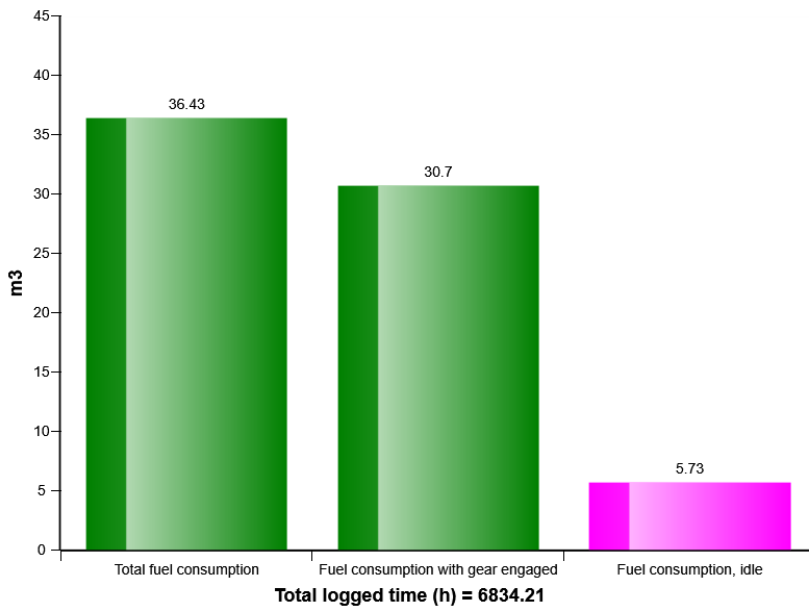
Machine model	SerialNo	Operating Hours	Reading Date
L90G	617156	6891.2	15/04/2019

Machine utilization (%)



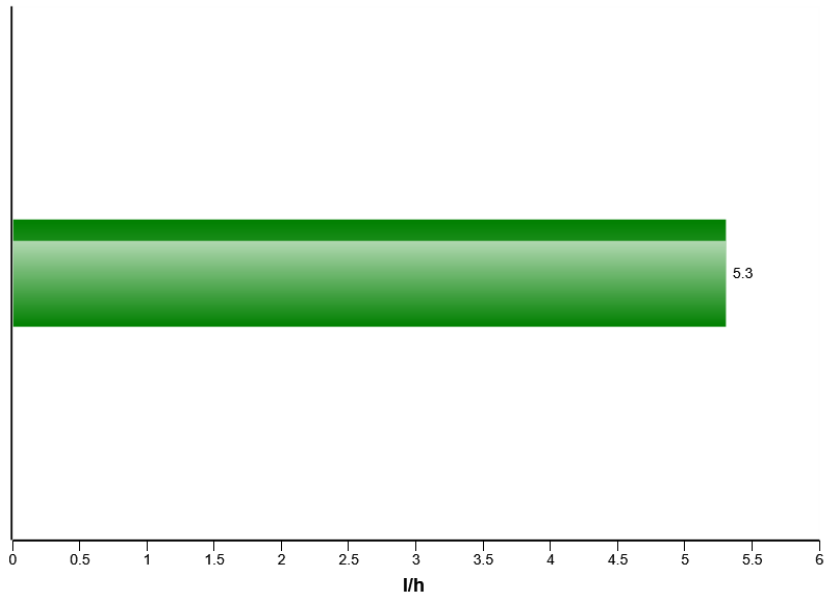
Total time (h) = 6833.7

Fuel consumption

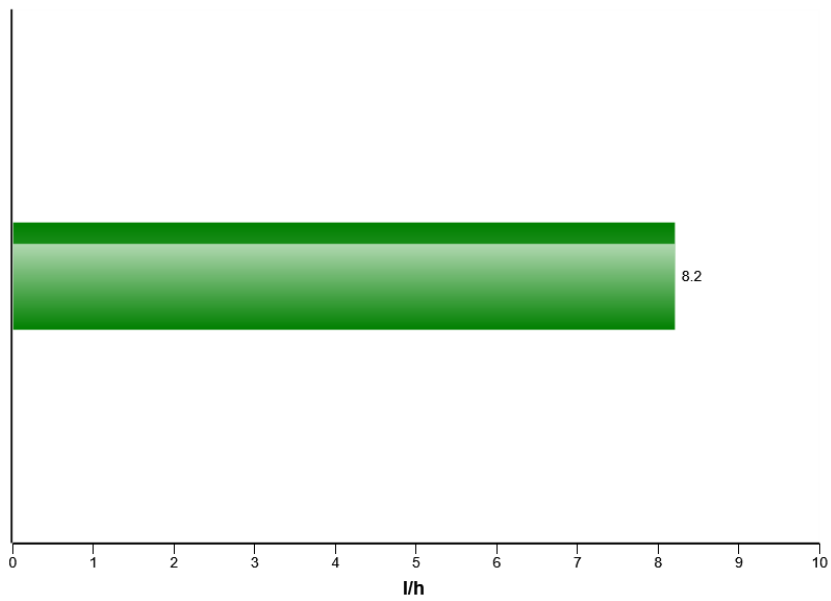


Machine model	SerialNo	Operating Hours	Reading Date
L90G	617156	6891.2	15/04/2019

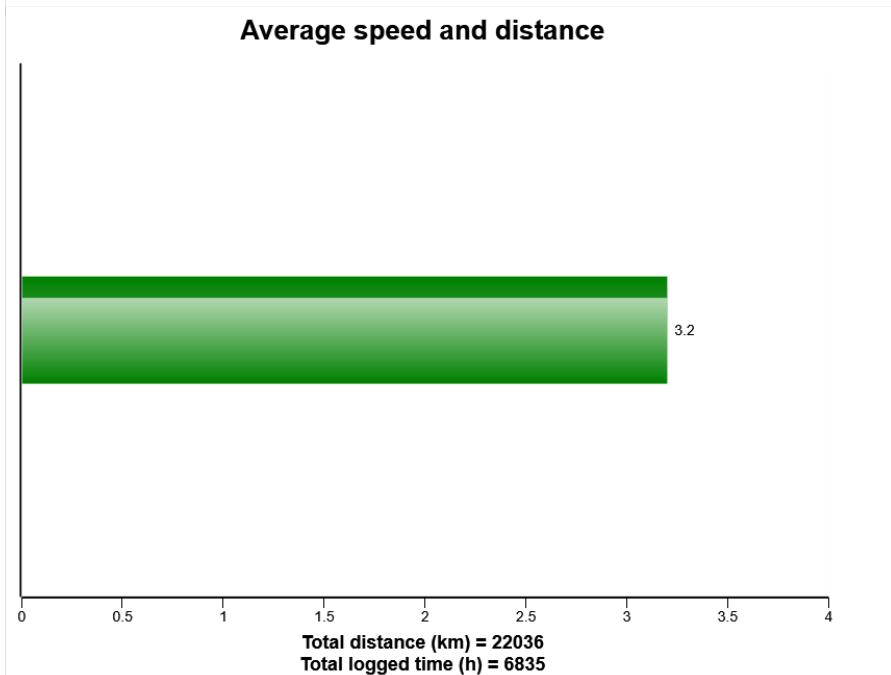
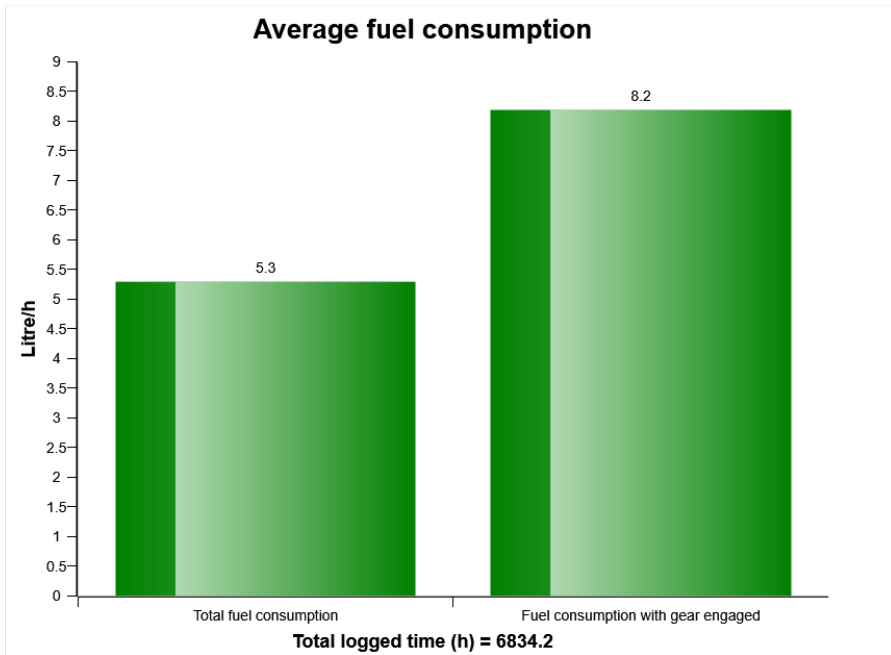
Average fuel consumption per hour



Average fuel consumption per hour with gear engaged

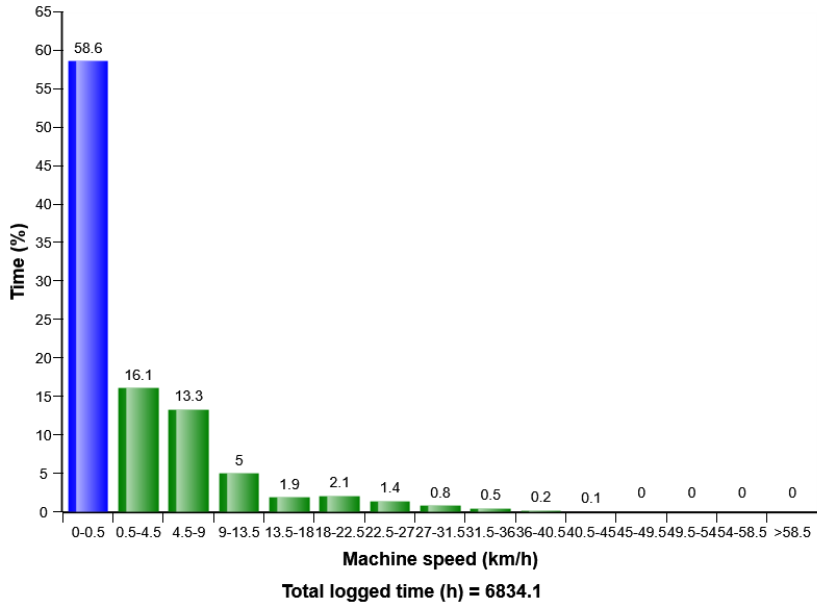


Machine model	SerialNo	Operating Hours	Reading Date
L90G	617156	6891.2	15/04/2019

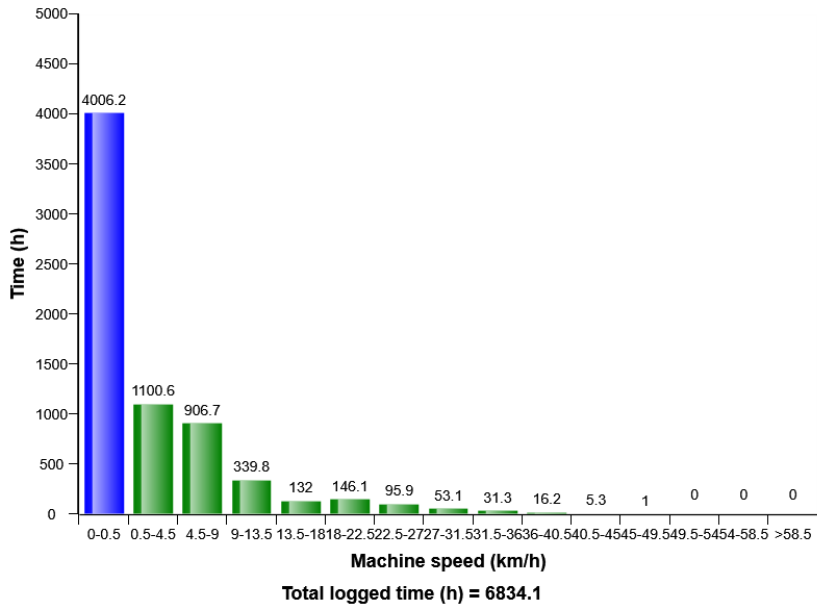


Machine model	SerialNo	Operating Hours	Reading Date
L90G	617156	6891.2	15/04/2019

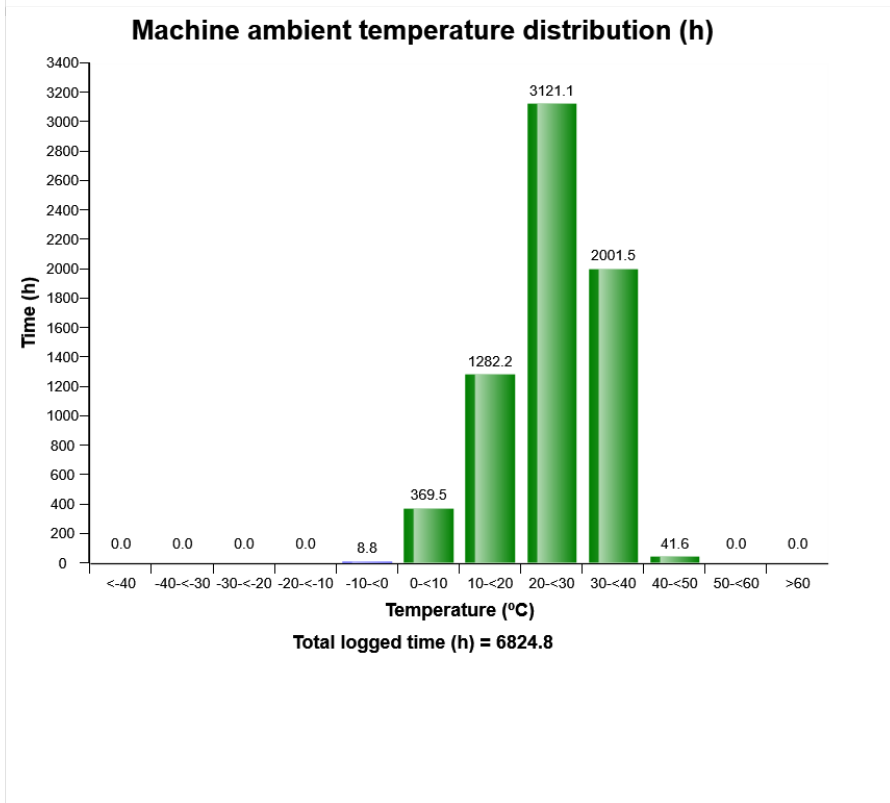
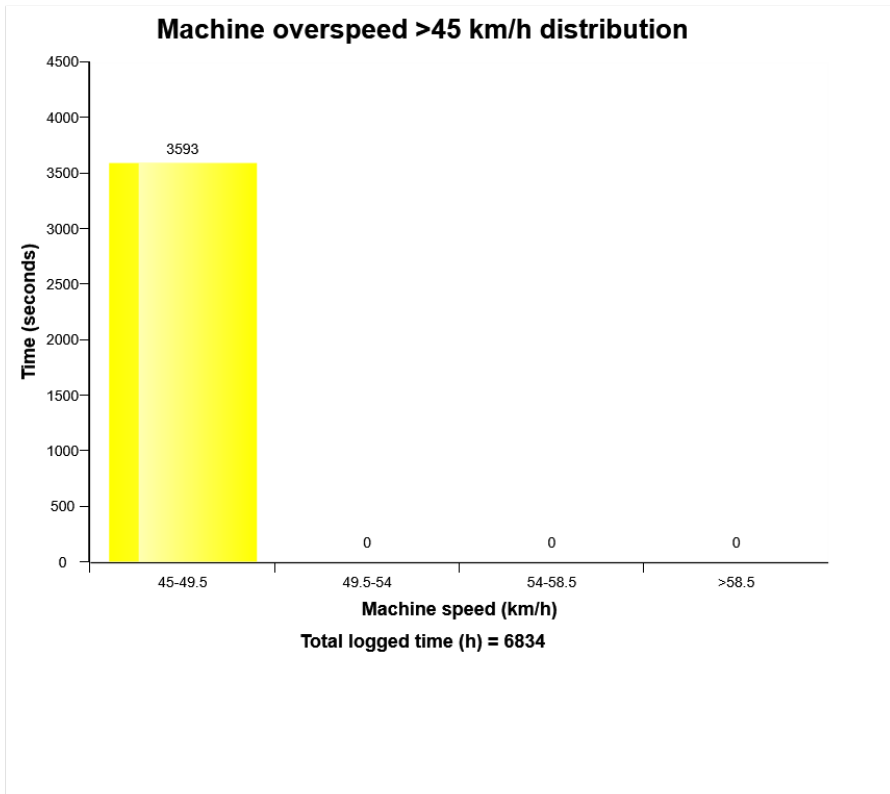
Machine speed, distribution (%)



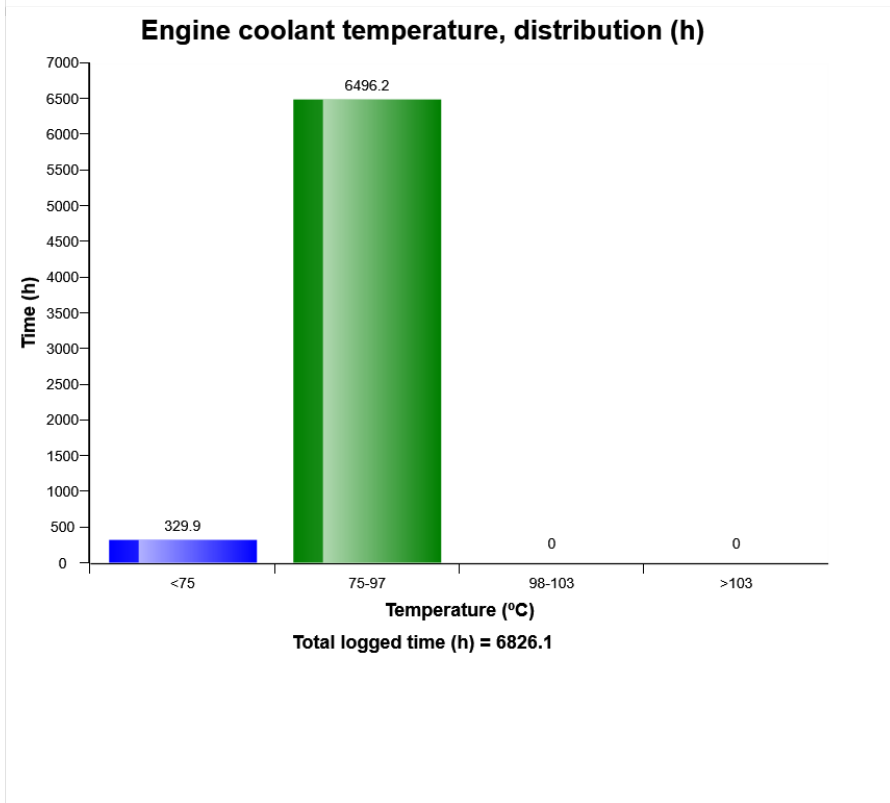
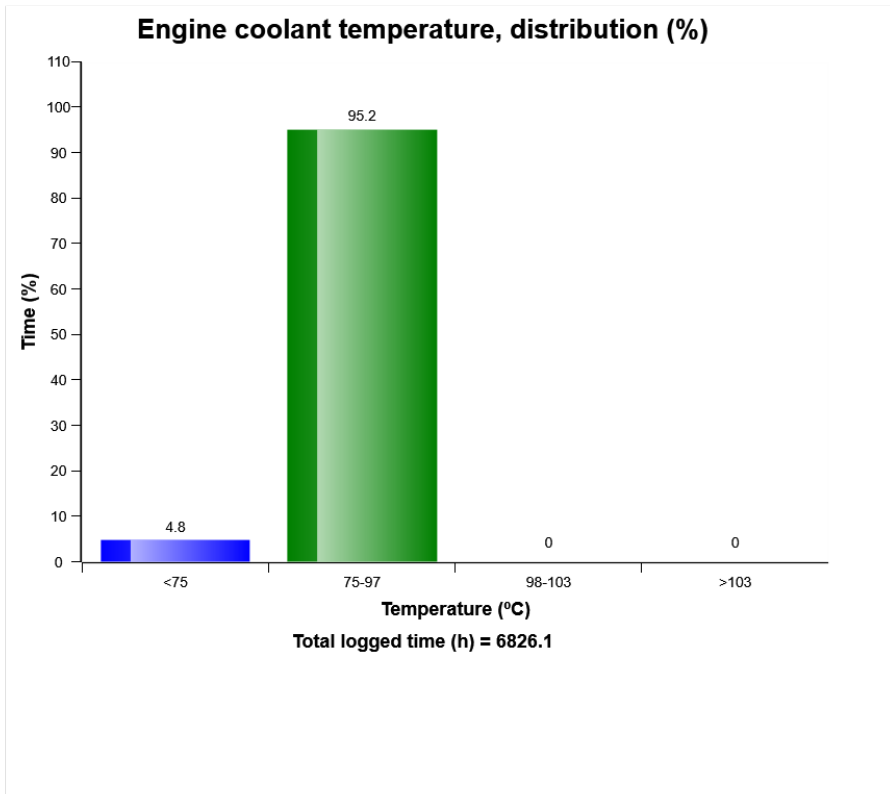
Machine speed, distribution



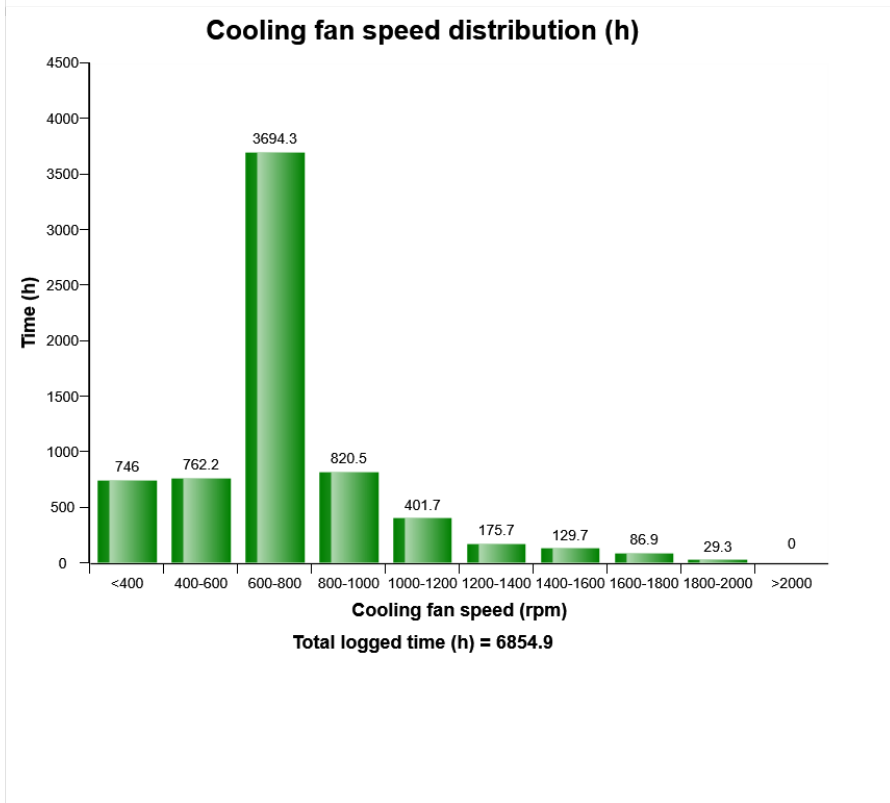
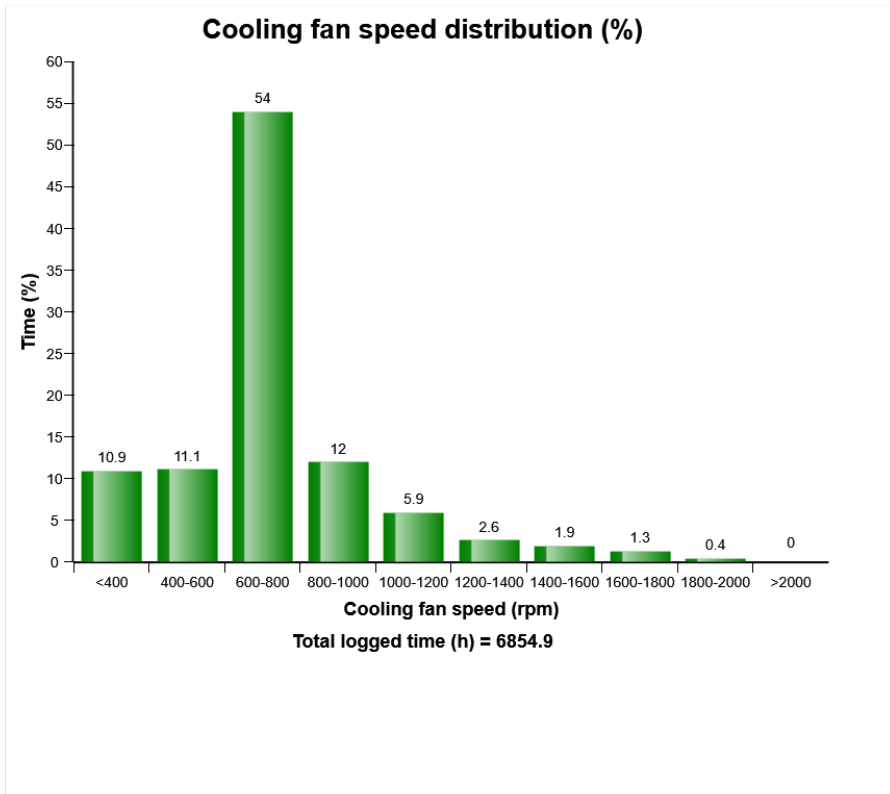
Machine model	SerialNo	Operating Hours	Reading Date
L90G	617156	6891.2	15/04/2019



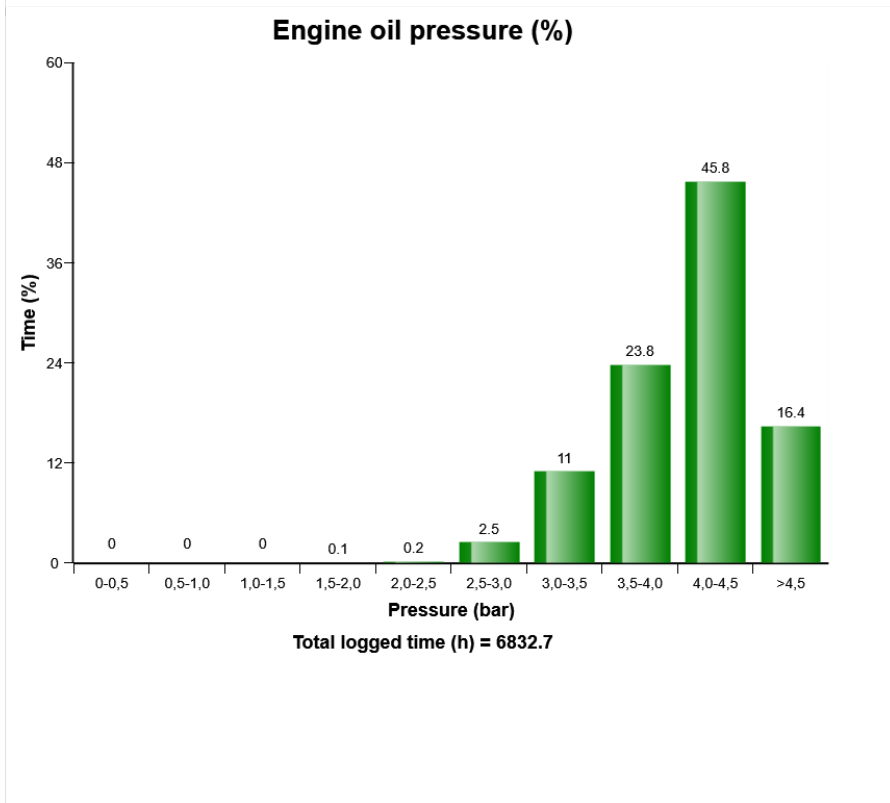
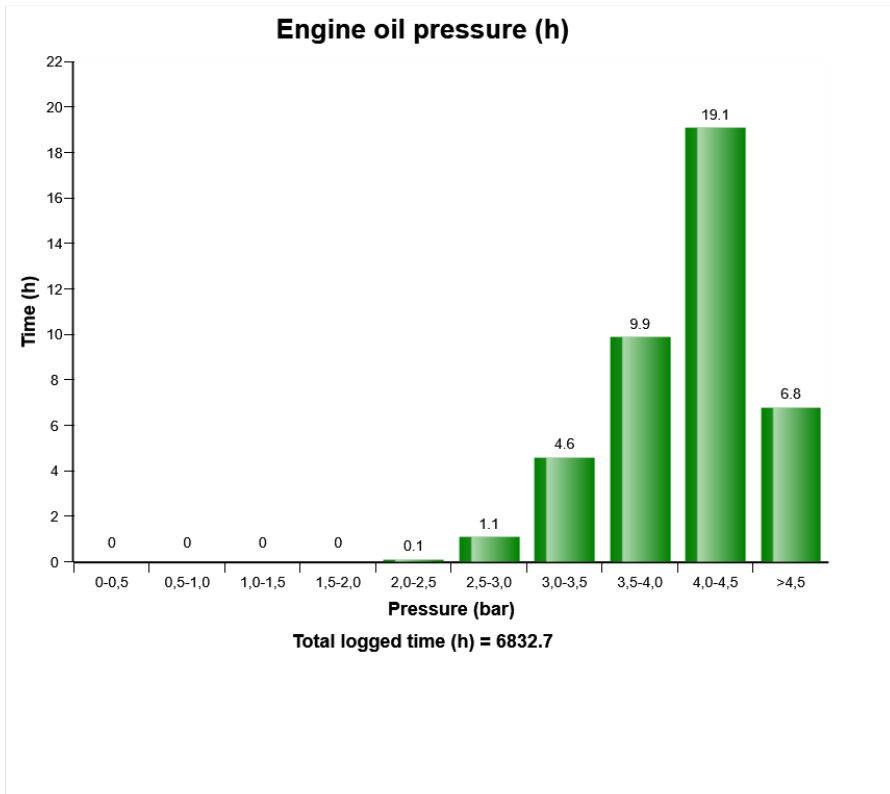
Machine model	SerialNo	Operating Hours	Reading Date
L90G	617156	6891.2	15/04/2019



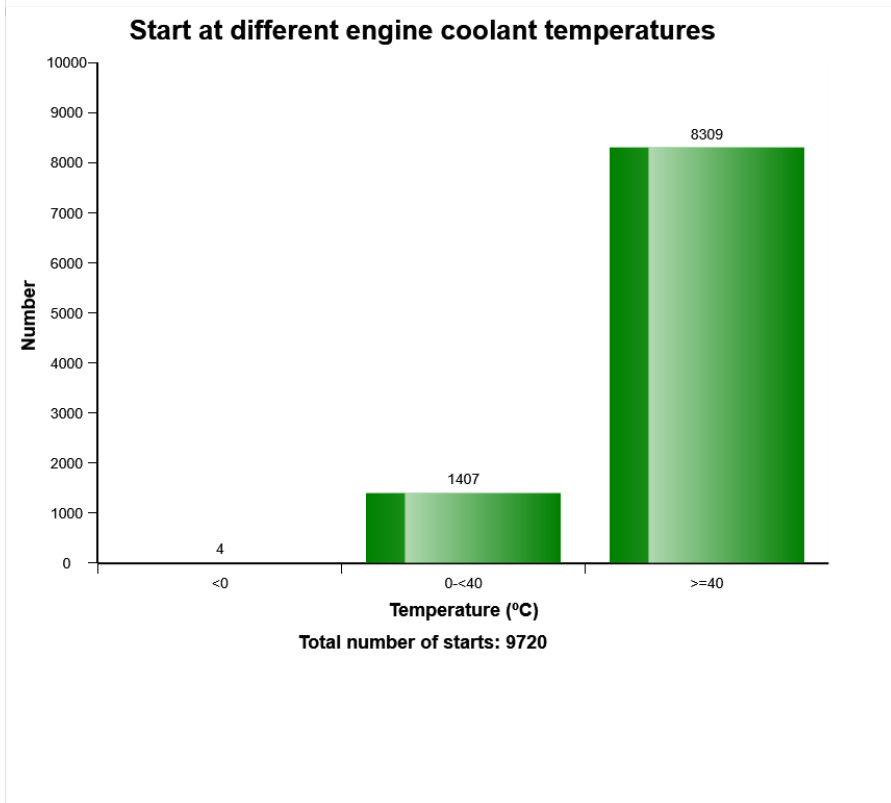
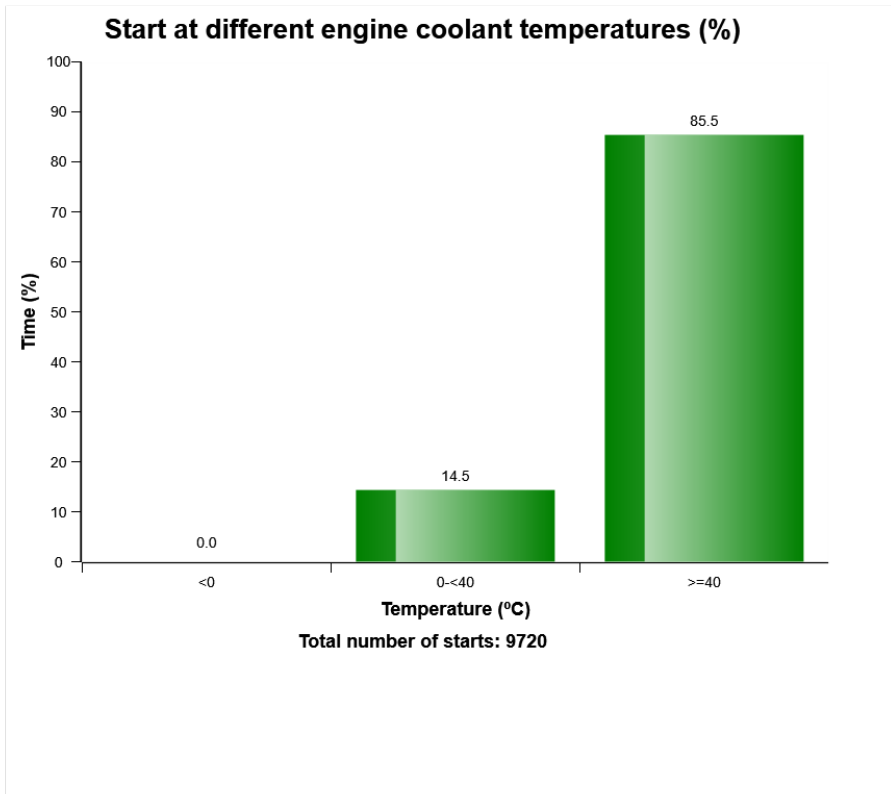
Machine model	SerialNo	Operating Hours	Reading Date
L90G	617156	6891.2	15/04/2019



Machine model	SerialNo	Operating Hours	Reading Date
L90G	617156	6891.2	15/04/2019

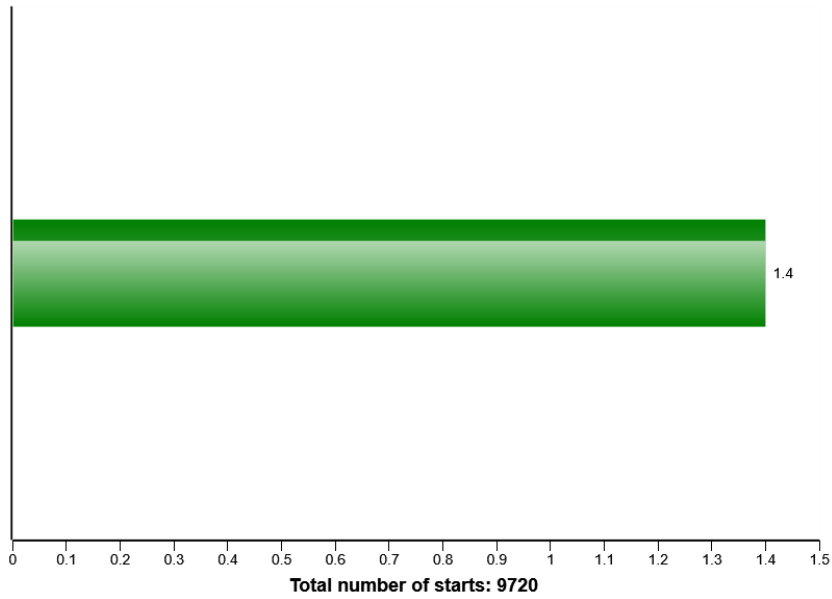


Machine model	SerialNo	Operating Hours	Reading Date
L90G	617156	6891.2	15/04/2019

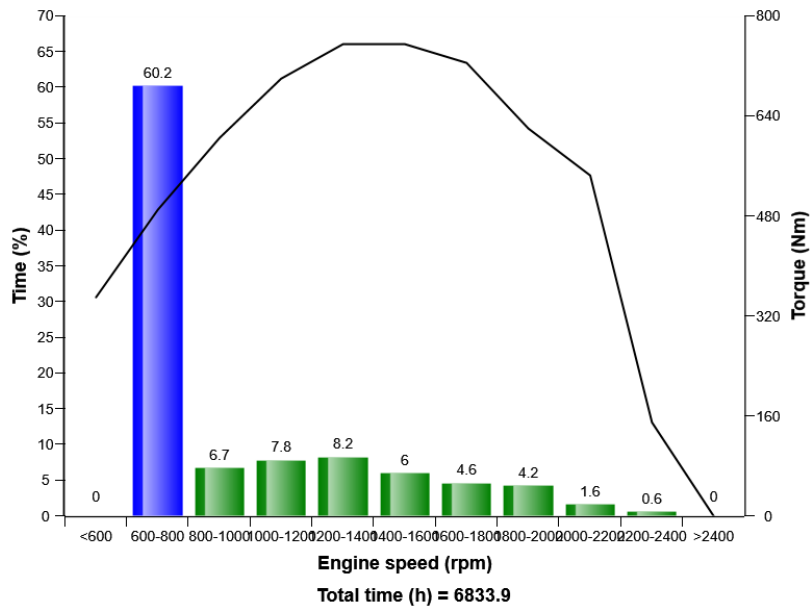


Machine model	SerialNo	Operating Hours	Reading Date
L90G	617156	6891.2	15/04/2019

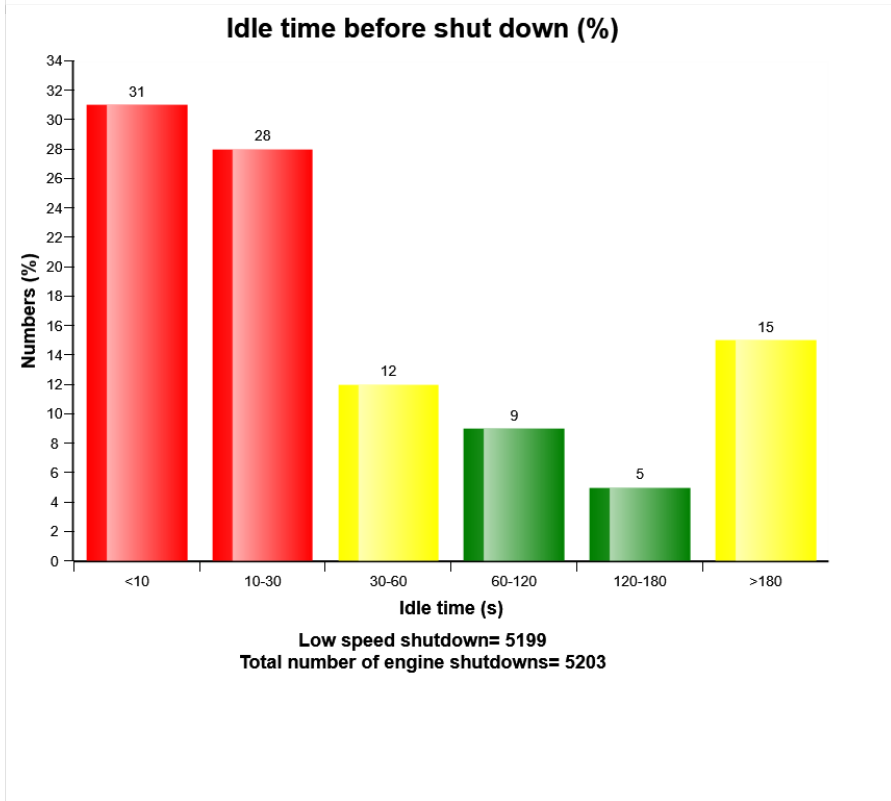
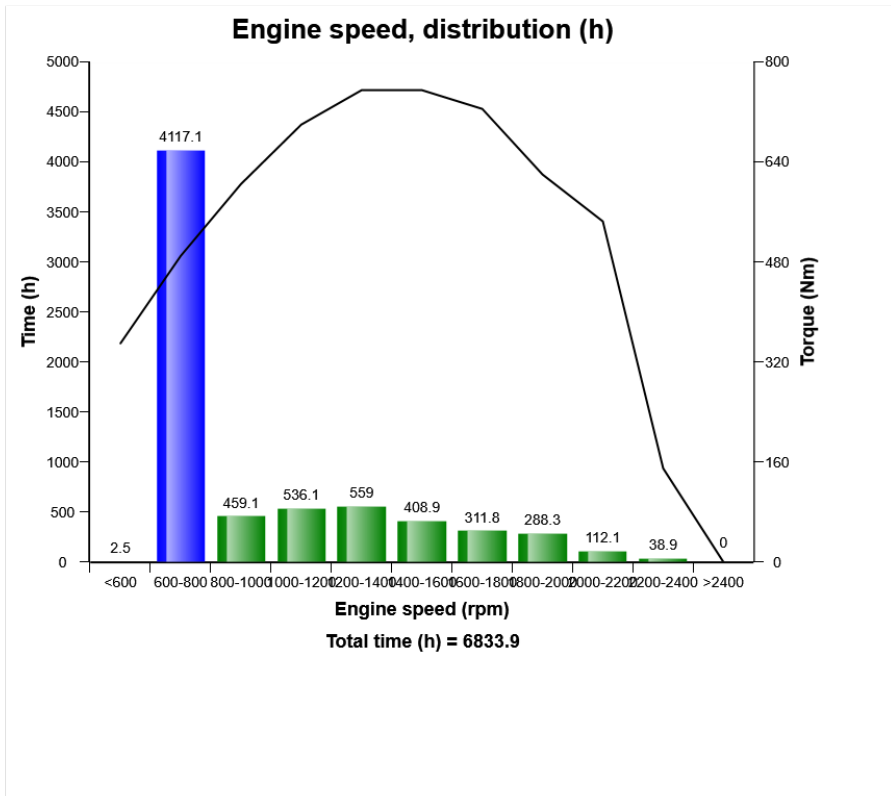
Average number of starts per hour



Engine speed, distribution (%)



Machine model	SerialNo	Operating Hours	Reading Date
L90G	617156	6891.2	15/04/2019



Machine model	SerialNo	Operating Hours	Reading Date
L90G	617156	6891.2	15/04/2019

Low Engine Oil Pressure
Total number of occurrences = 1

	Op hours	Year	Month	Day	Hour	Minute	Duration (sec)
J	0	2000	0	0	0	0	0
R	0	2000	0	0	0	0	0
Q	0	2000	0	0	0	0	0
P	0	2000	0	0	0	0	0
O	0	2000	0	0	0	0	0
N	0	2000	0	0	0	0	0
M	0	2000	0	0	0	0	0
L	0	2000	0	0	0	0	0
K	0	2000	0	0	0	0	0
T	0	2000	0	0	0	0	0
I	0	2000	0	0	0	0	0
H	0	2000	0	0	0	0	0
G	0	2000	0	0	0	0	0
F	0	2000	0	0	0	0	0
E	0	2000	0	0	0	0	0
D	0	2000	0	0	0	0	0
C	0	2000	0	0	0	0	0
B	0	2000	0	0	0	0	0
S	0	2000	0	0	0	0	0
A	5769	2017	11	10	8	59	62



**Extreme
(bar)**

0

0

0

0

0

0

0

0

0

0

0

0

0

0

0

0

0

0

0

0



Machine model	SerialNo	Operating Hours	Reading Date
L90G	617156	6891.2	15/04/2019

**Low engine oil level at start
Total number of occurrences = 0**

	Op hours	Year	Month	Day	Hour
*	0	2000	0	0	0
*	0	2000	0	0	0
*	0	2000	0	0	0
*	0	2000	0	0	0
*	0	2000	0	0	0
*	0	2000	0	0	0
*	0	2000	0	0	0
*	0	2000	0	0	0
*	0	2000	0	0	0
*	0	2000	0	0	0
*	0	2000	0	0	0
*	0	2000	0	0	0
*	0	2000	0	0	0
*	0	2000	0	0	0
*	0	2000	0	0	0
*	0	2000	0	0	0
*	0	2000	0	0	0
*	0	2000	0	0	0
*	0	2000	0	0	0
*	0	2000	0	0	0
*	0	2000	0	0	0



Minute

0

0

0

0

0

0

0

0

0

0

0

0

0

0

0

0

0

0

0

0



Machine model	SerialNo	Operating Hours	Reading Date
L90G	617156	6891.2	15/04/2019

High engine coolant temperature
Total number of occurrences = 0

Op hours	Year	Month	Day	Hour	Minute	Duration (sec)	Extreme (° C)
0	2000	0	0	0	0	0	0
0	2000	0	0	0	0	0	0
0	2000	0	0	0	0	0	0
0	2000	0	0	0	0	0	0
0	2000	0	0	0	0	0	0
0	2000	0	0	0	0	0	0
0	2000	0	0	0	0	0	0
0	2000	0	0	0	0	0	0
0	2000	0	0	0	0	0	0
0	2000	0	0	0	0	0	0
0	2000	0	0	0	0	0	0
0	2000	0	0	0	0	0	0
0	2000	0	0	0	0	0	0
0	2000	0	0	0	0	0	0
0	2000	0	0	0	0	0	0
0	2000	0	0	0	0	0	0
0	2000	0	0	0	0	0	0
0	2000	0	0	0	0	0	0
0	2000	0	0	0	0	0	0
0	2000	0	0	0	0	0	0
0	2000	0	0	0	0	0	0
0	2000	0	0	0	0	0	0
0	2000	0	0	0	0	0	0
0	2000	0	0	0	0	0	0



Machine model	SerialNo	Operating Hours	Reading Date
L90G	617156	6891.2	15/04/2019

Low Air filter pressure
Total number of occurrences = 0

Op hours	Year	Month	Day	Hour	Minute	Duration (sec)
0	2000	0	0	0	0	0
0	2000	0	0	0	0	0
0	2000	0	0	0	0	0
0	2000	0	0	0	0	0
0	2000	0	0	0	0	0
0	2000	0	0	0	0	0
0	2000	0	0	0	0	0
0	2000	0	0	0	0	0
0	2000	0	0	0	0	0
0	2000	0	0	0	0	0
0	2000	0	0	0	0	0
0	2000	0	0	0	0	0
0	2000	0	0	0	0	0
0	2000	0	0	0	0	0
0	2000	0	0	0	0	0
0	2000	0	0	0	0	0
0	2000	0	0	0	0	0
0	2000	0	0	0	0	0
0	2000	0	0	0	0	0
0	2000	0	0	0	0	0
0	2000	0	0	0	0	0
0	2000	0	0	0	0	0
0	2000	0	0	0	0	0
0	2000	0	0	0	0	0



Machine model	SerialNo	Operating Hours	Reading Date
L90G	617156	6891.2	15/04/2019

Starter overheating
Total number of occurrences = 0

Op hours	Year	Month	Day	Hour	Minute
0	2000	0	0	0	0
0	2000	0	0	0	0
0	2000	0	0	0	0
0	2000	0	0	0	0
0	2000	0	0	0	0
0	2000	0	0	0	0
0	2000	0	0	0	0
0	2000	0	0	0	0
0	2000	0	0	0	0
0	2000	0	0	0	0
0	2000	0	0	0	0
0	2000	0	0	0	0
0	2000	0	0	0	0
0	2000	0	0	0	0
0	2000	0	0	0	0
0	2000	0	0	0	0
0	2000	0	0	0	0
0	2000	0	0	0	0
0	2000	0	0	0	0
0	2000	0	0	0	0
0	2000	0	0	0	0
0	2000	0	0	0	0



Machine model	SerialNo	Operating Hours	Reading Date
L90G	617156	6891.2	15/04/2019

Regeneration ignored
Total number of ignored regenerations 256

	Op hours	Year	Month	Day	Hour	Minute
*	4252	2016	11	30	13	13
*	4252	2016	11	29	13	17
*	5899	2018	1	3	16	39
*	5900	2018	1	4	9	15
*	5900	2018	1	4	8	49
*	5963	2018	1	18	21	0
*	6069	2018	2	6	11	8
*	6072	2018	2	7	9	37
*	6072	2018	2	7	11	7
*	6072	2018	2	7	11	32
*	6072	2018	2	6	15	0
*	6072	2018	2	6	17	3
*	6073	2018	2	7	12	21
*	6073	2018	2	8	15	14
*	6092	2018	2	13	9	29
*	6093	2018	2	14	8	59
*	6093	2018	2	14	11	26
*	6093	2018	2	14	11	36
*	6094	2018	2	14	12	17
*	6094	2018	2	14	13	23



Duration (min)
15
17
49
59
23
78
205
0
0
32
4
1
0
16
59
108
7
40
11
91



Machine model	SerialNo	Operating Hours	Reading Date
L90G	617156	6891.2	15/04/2019

Regeneration aborted
Total number of occurrences = 402

Op hours	Year	Month	Day	Hour	Minute	Reason
5329	2017	8	17	12	22	1
5329	2017	8	17	13	12	1
5329	2017	8	17	14	28	1
5465	2017	9	23	10	10	1
5465	2017	9	23	10	16	1
5567	2017	10	12	16	3	1
5577	2017	10	13	17	28	1
5594	2017	10	17	17	38	1
5612	2017	10	19	17	41	1
5664	2017	10	31	12	38	1
5792	2017	11	21	13	6	1
5792	2017	11	21	16	2	1
5845	2017	12	11	13	42	1
5901	2018	1	4	9	39	1
5963	2018	1	18	21	26	2
5964	2018	1	18	21	51	2
6081	2018	2	9	17	28	1
6371	2018	3	29	15	47	1
6771	2018	5	24	19	14	1
6830	2018	8	14	11	0	2



Machine model	SerialNo	Operating Hours	Reading Date
L90G	617156	6891.2	15/04/2019

Regeneration duration
Total number of occurrences = 1312

Op hours	Year	Month	Day	Hour	Minute	Duration (min)
6677	2018	5	14	14	47	27
6686	2018	5	15	11	27	27
6694	2018	5	16	9	36	28
6703	2018	5	16	18	42	27
6711	2018	5	17	16	6	28
6720	2018	5	18	14	51	27
6728	2018	5	21	10	28	28
6737	2018	5	21	18	58	26
6745	2018	5	22	16	3	27
6754	2018	5	23	13	53	27
6763	2018	5	24	10	4	26
6771	2018	5	25	7	20	28
6771	2018	5	24	19	13	1
6780	2018	5	29	9	16	28
6788	2018	5	29	18	16	26
6796	2018	5	30	15	46	27
6805	2018	5	31	9	0	27
6813	2018	5	31	18	6	27
6821	2018	6	4	14	51	27
6829	2018	8	14	10	33	54



Machine model	SerialNo	Operating Hours	Reading Date
L90G	617156	6891.2	15/04/2019

Water level warning in water separator
Total number of occurrences = 1

Op hours	Year	Month	Day	Hour	Minute	Duration (min)
0	2000	0	0	0	0	0
0	2000	0	0	0	0	0
0	2000	0	0	0	0	0
0	2000	0	0	0	0	0
0	2000	0	0	0	0	0
0	2000	0	0	0	0	0
0	2000	0	0	0	0	0
0	2000	0	0	0	0	0
0	2000	0	0	0	0	0
0	2000	0	0	0	0	0
0	2000	0	0	0	0	0
0	2000	0	0	0	0	0
0	2000	0	0	0	0	0
0	2000	0	0	0	0	0
0	2000	0	0	0	0	0
0	2000	0	0	0	0	0
0	2000	0	0	0	0	0
0	2000	0	0	0	0	0
0	2000	0	0	0	0	0
0	2000	0	0	0	0	0
0	2000	0	0	0	0	0
0	2000	0	0	0	0	0
0	2000	0	0	0	0	0
0	2000	0	0	0	0	0
0	2000	0	0	0	0	0
0	2000	0	0	0	0	0
0	2000	0	0	0	0	0
4522	2017	3	28	15	50	131



Machine model	SerialNo	Operating Hours	Reading Date
L90G	617156	6891.2	15/04/2019

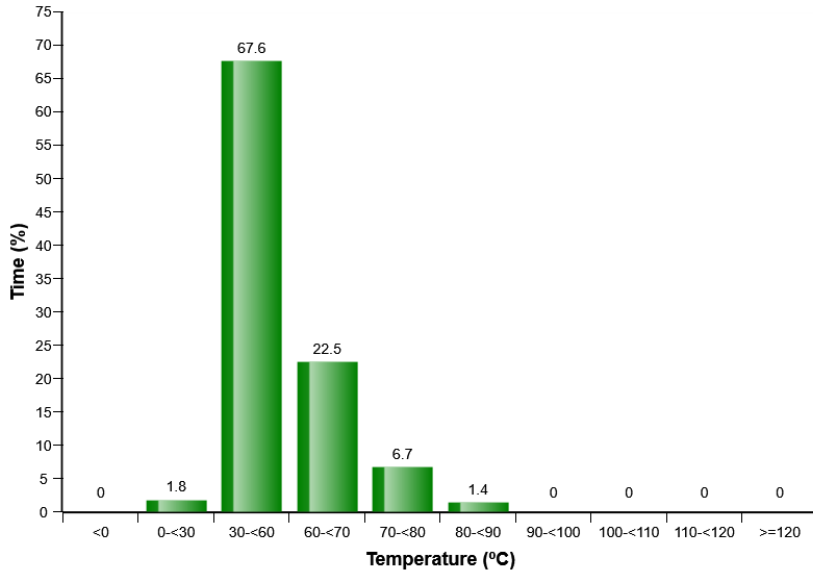
**Low voltage
Total number of occurrences = 1**

Op hours	Year	Month	Day	Hour	Minute	Duration (sec)	Extreme value
6007	2018	1	18	21	46	23	15.4
0	2000	0	0	0	0	0	0.0
0	2000	0	0	0	0	0	0.0
0	2000	0	0	0	0	0	0.0
0	2000	0	0	0	0	0	0.0
0	2000	0	0	0	0	0	0.0
0	2000	0	0	0	0	0	0.0
0	2000	0	0	0	0	0	0.0
0	2000	0	0	0	0	0	0.0
0	2000	0	0	0	0	0	0.0
0	2000	0	0	0	0	0	0.0
0	2000	0	0	0	0	0	0.0
0	2000	0	0	0	0	0	0.0
0	2000	0	0	0	0	0	0.0
0	2000	0	0	0	0	0	0.0
0	2000	0	0	0	0	0	0.0
0	2000	0	0	0	0	0	0.0
0	2000	0	0	0	0	0	0.0
0	2000	0	0	0	0	0	0.0
0	2000	0	0	0	0	0	0.0
0	2000	0	0	0	0	0	0.0
0	2000	0	0	0	0	0	0.0
0	2000	0	0	0	0	0	0.0
0	2000	0	0	0	0	0	0.0
0	2000	0	0	0	0	0	0.0
0	2000	0	0	0	0	0	0.0
0	2000	0	0	0	0	0	0.0
0	2000	0	0	0	0	0	0.0
0	2000	0	0	0	0	0	0.0
0	2000	0	0	0	0	0	0.0
0	2000	0	0	0	0	0	0.0
0	2000	0	0	0	0	0	0.0
0	2000	0	0	0	0	0	0.0

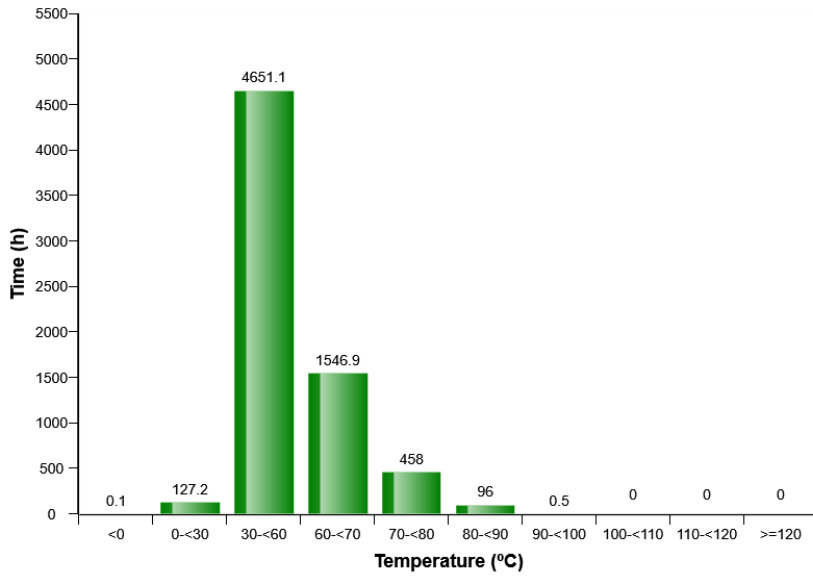


Machine model	SerialNo	Operating Hours	Reading Date
L90G	617156	6891.2	15/04/2019

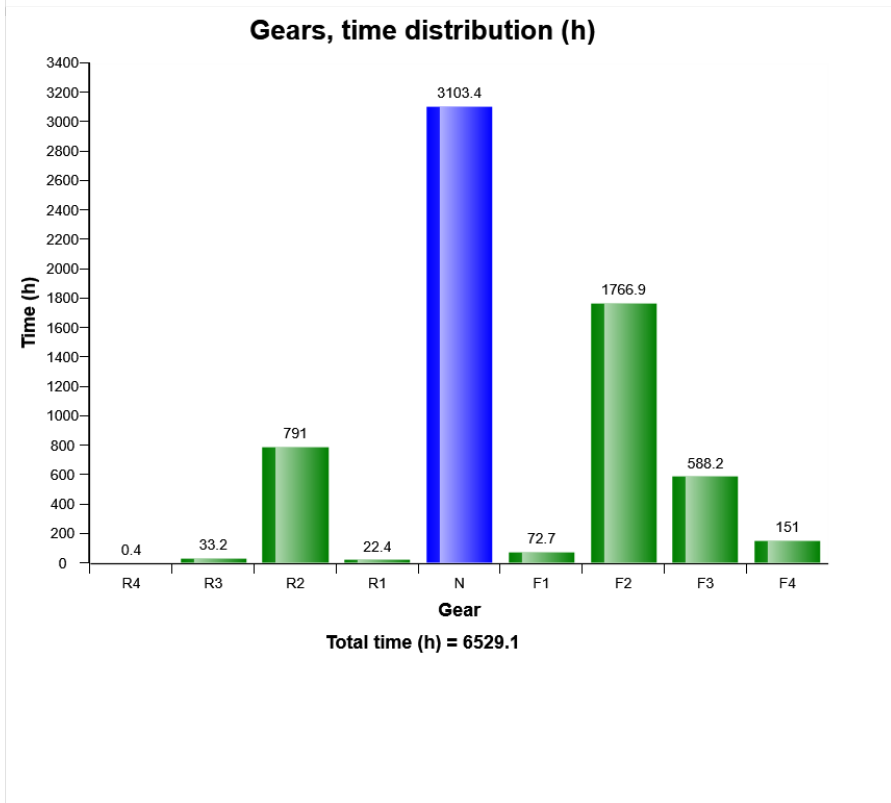
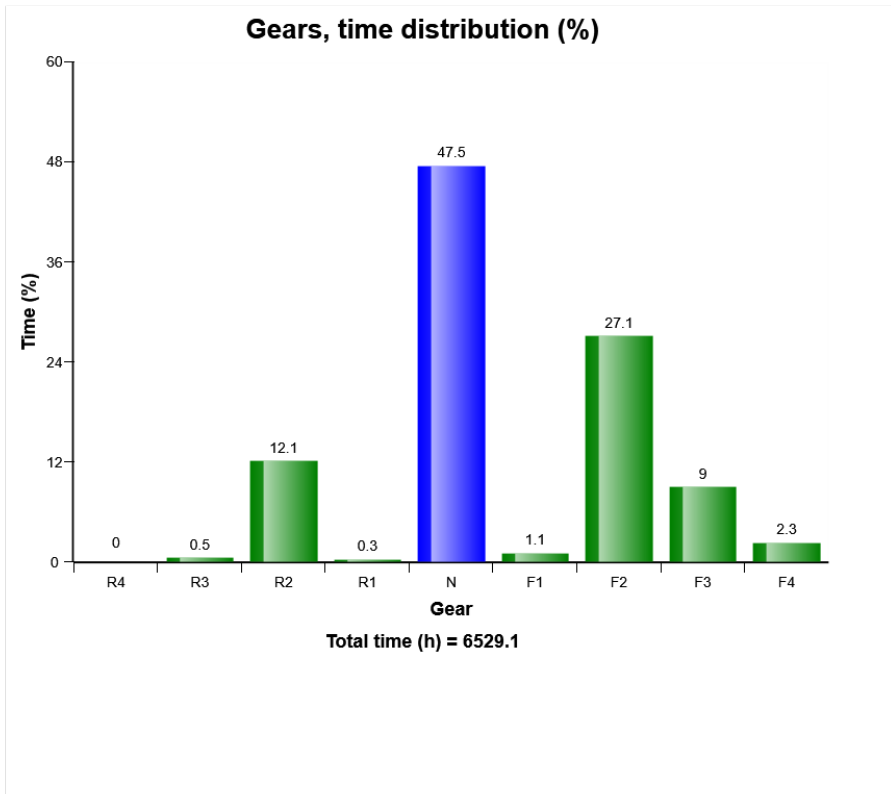
Transmission oil, temperature distribution (%)



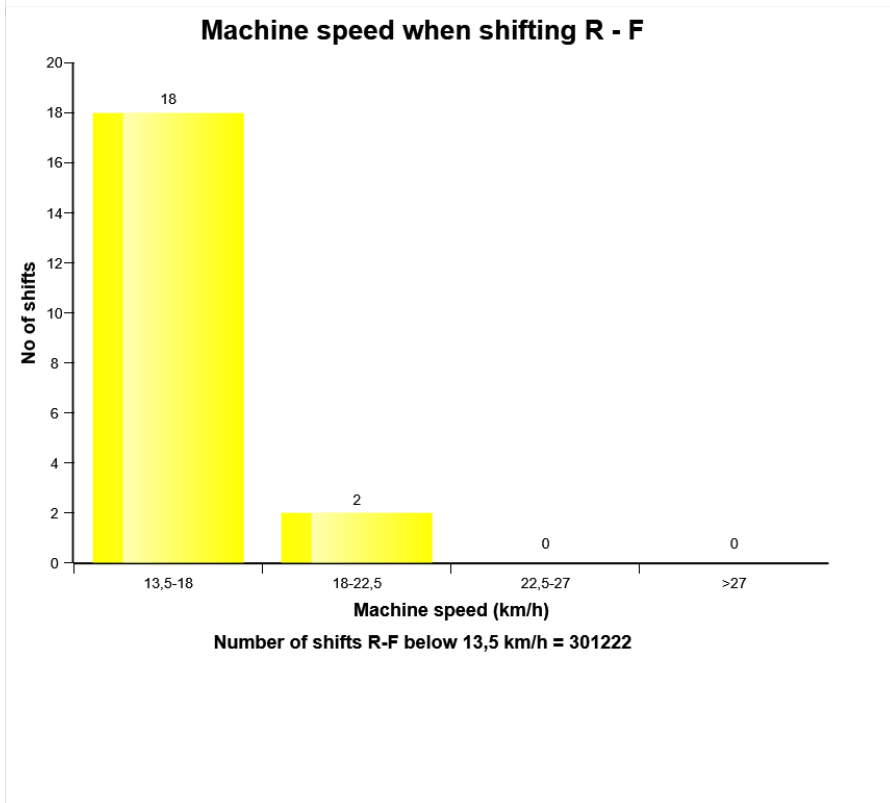
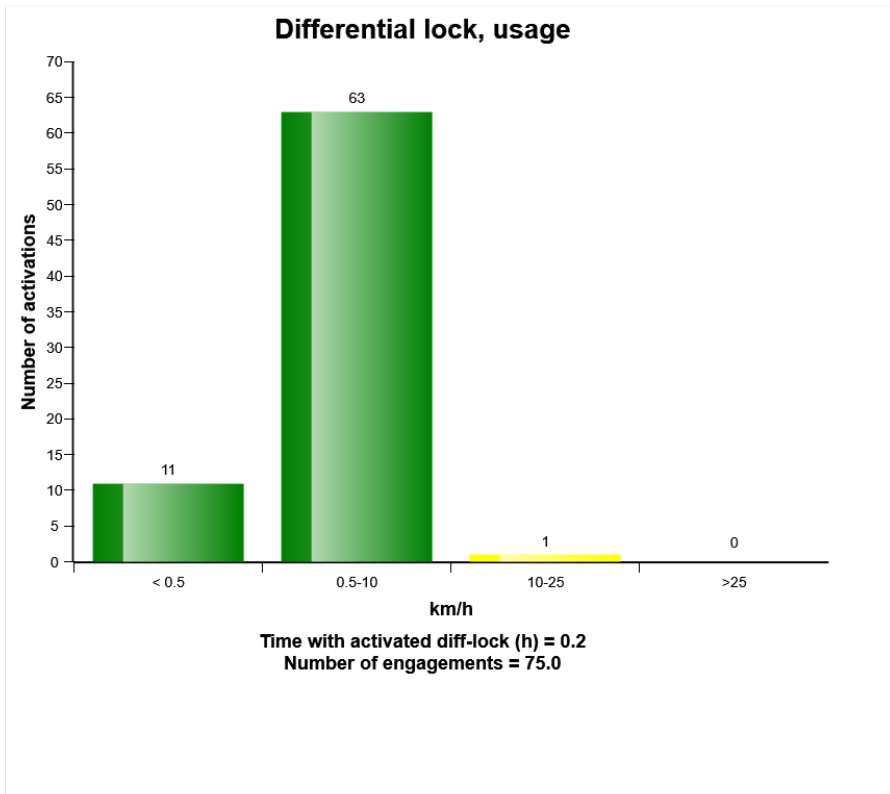
Transmission oil, temperature distribution (h)



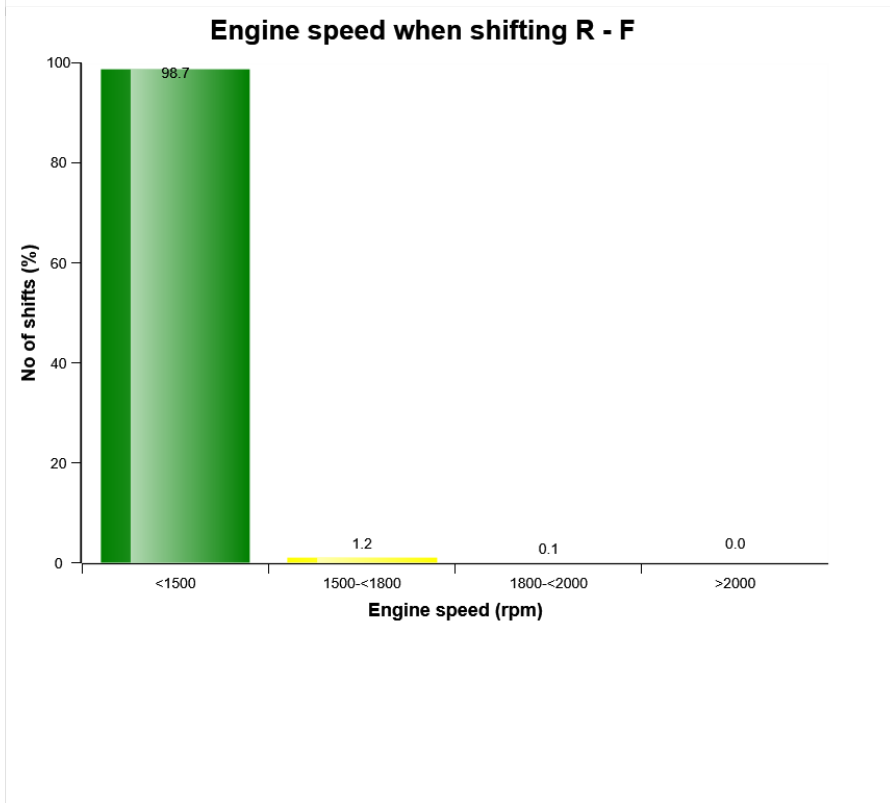
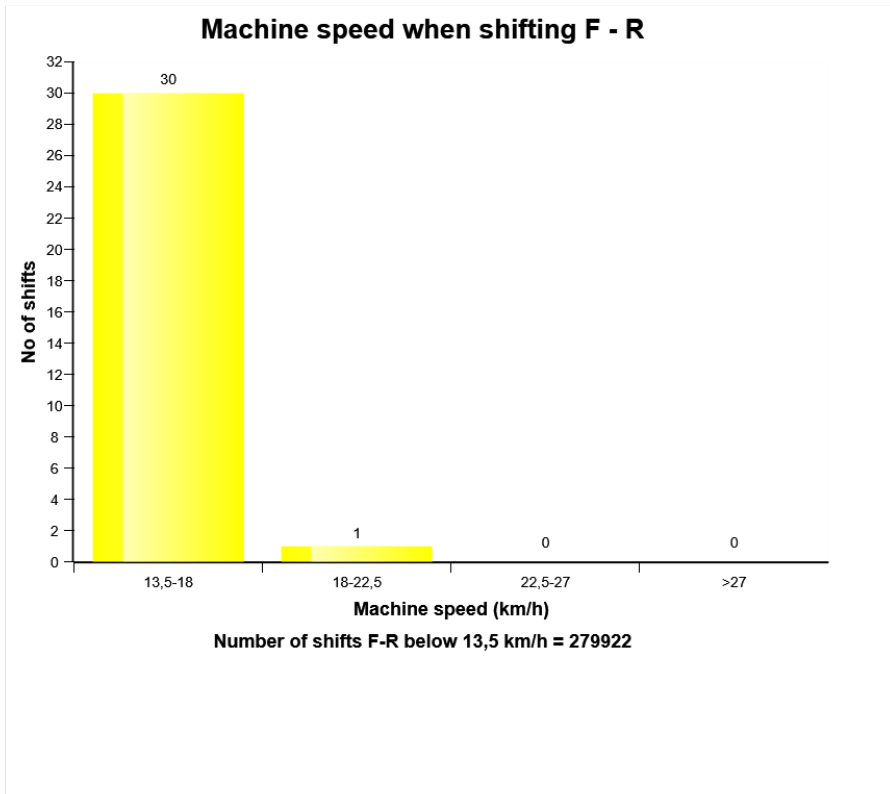
Machine model	SerialNo	Operating Hours	Reading Date
L90G	617156	6891.2	15/04/2019



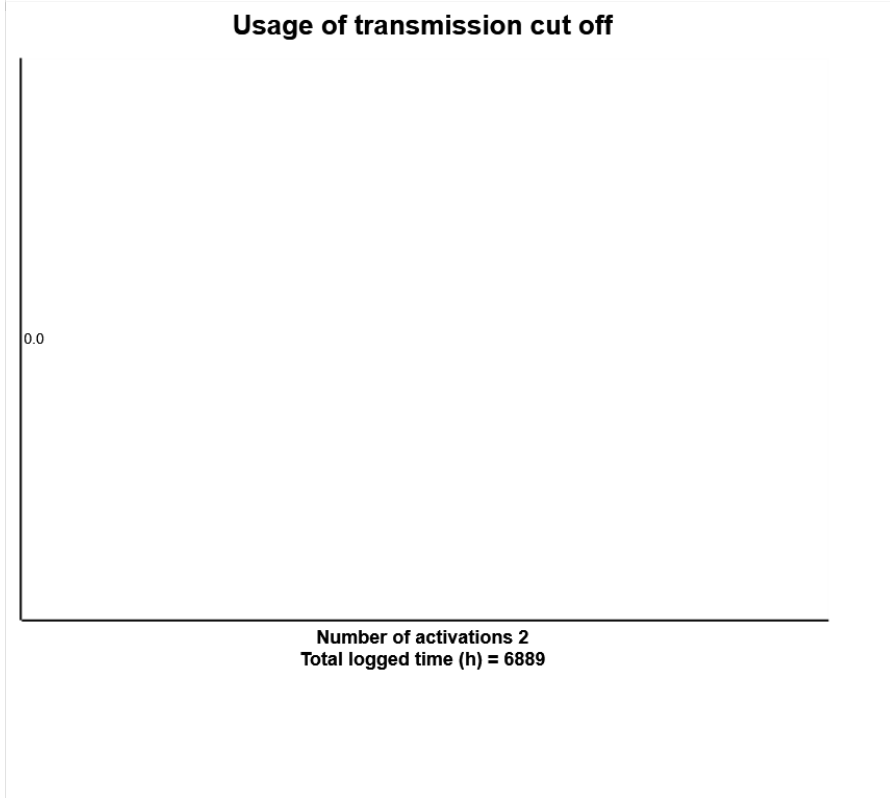
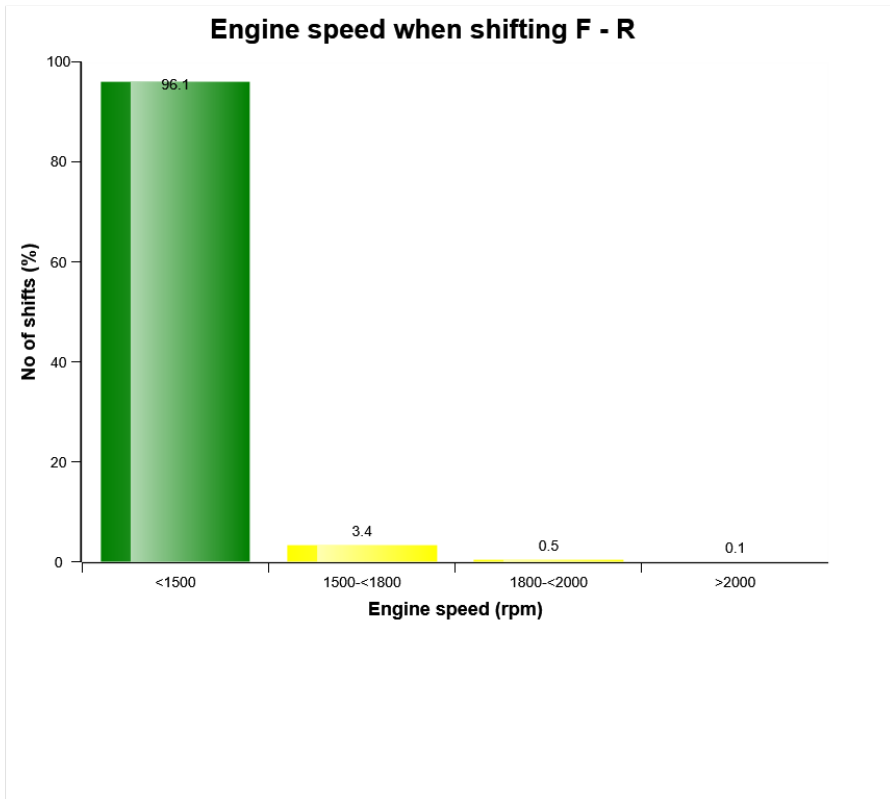
Machine model	SerialNo	Operating Hours	Reading Date
L90G	617156	6891.2	15/04/2019



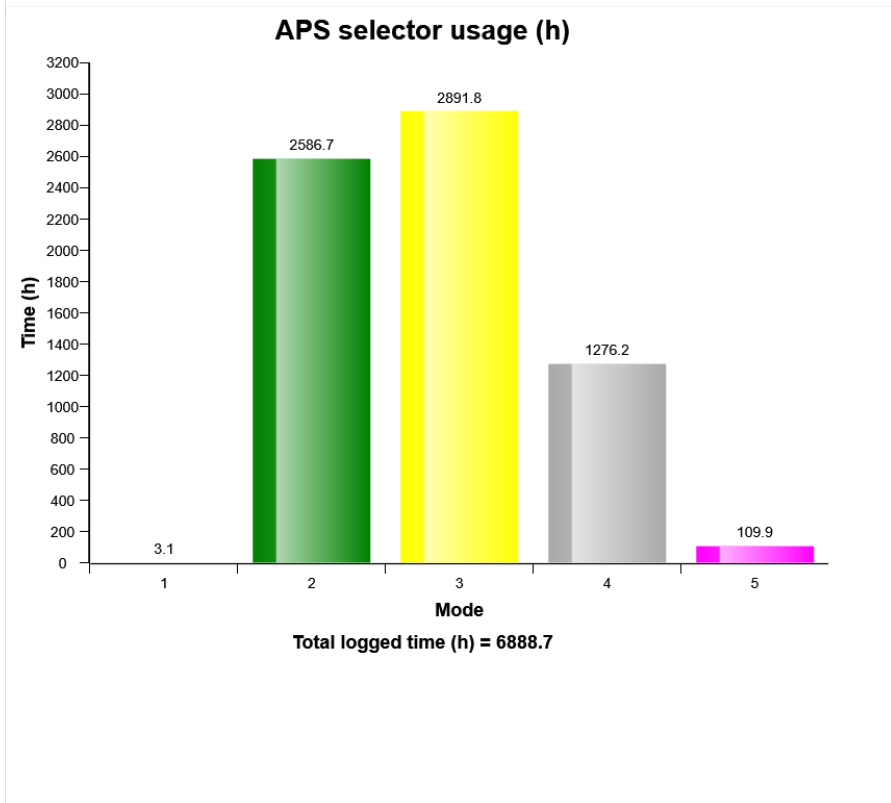
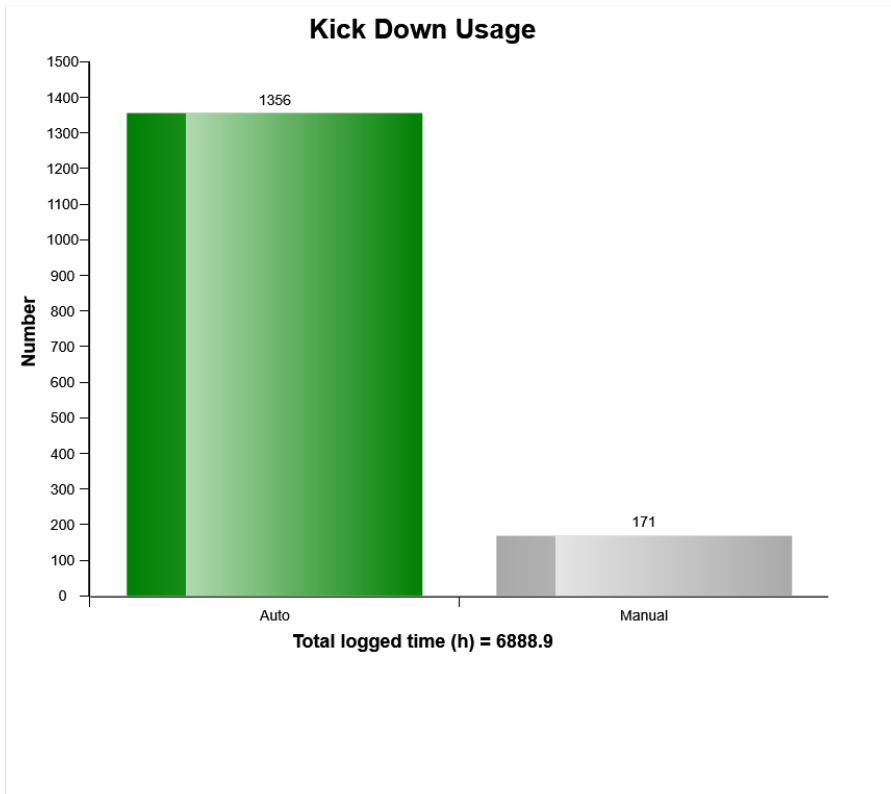
Machine model	SerialNo	Operating Hours	Reading Date
L90G	617156	6891.2	15/04/2019



Machine model	SerialNo	Operating Hours	Reading Date
L90G	617156	6891.2	15/04/2019



Machine model	SerialNo	Operating Hours	Reading Date
L90G	617156	6891.2	15/04/2019



Machine model	SerialNo	Operating Hours	Reading Date
L90G	617156	6891.2	15/04/2019

Transmission oil temperature high
Total number of occurrences = 0

Op hours	Year	Month	Day	Hour	Minute	Duration (sec)	Extreme (° C)
0	2000	0	0	0	0	0	0
0	2000	0	0	0	0	0	0
0	2000	0	0	0	0	0	0
0	2000	0	0	0	0	0	0
0	2000	0	0	0	0	0	0
0	2000	0	0	0	0	0	0
0	2000	0	0	0	0	0	0
0	2000	0	0	0	0	0	0
0	2000	0	0	0	0	0	0
0	2000	0	0	0	0	0	0
0	2000	0	0	0	0	0	0
0	2000	0	0	0	0	0	0
0	2000	0	0	0	0	0	0
0	2000	0	0	0	0	0	0
0	2000	0	0	0	0	0	0
0	2000	0	0	0	0	0	0
0	2000	0	0	0	0	0	0
0	2000	0	0	0	0	0	0
0	2000	0	0	0	0	0	0
0	2000	0	0	0	0	0	0
0	2000	0	0	0	0	0	0
0	2000	0	0	0	0	0	0
0	2000	0	0	0	0	0	0



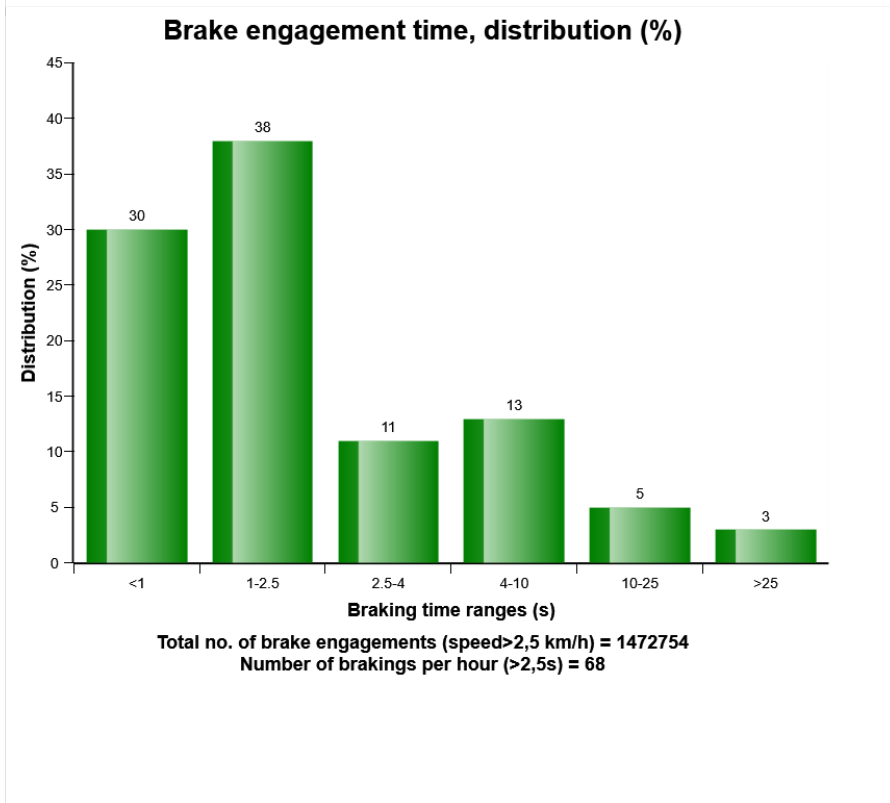
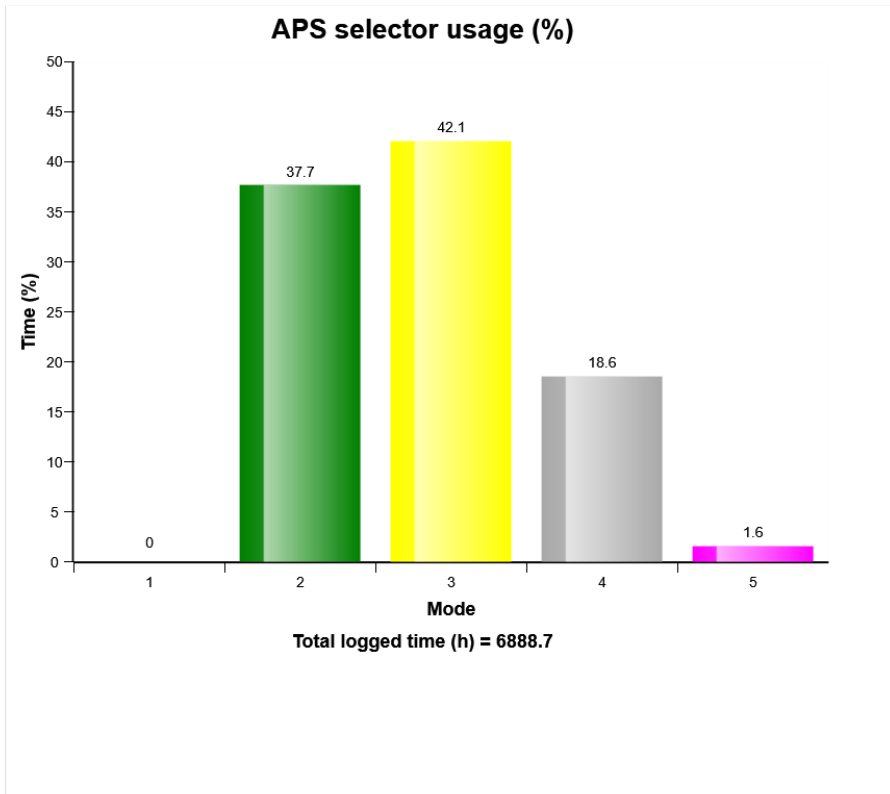
Machine model	SerialNo	Operating Hours	Reading Date
L90G	617156	6891.2	15/04/2019

Transmission oil pressure low
Total number of occurrences = 0

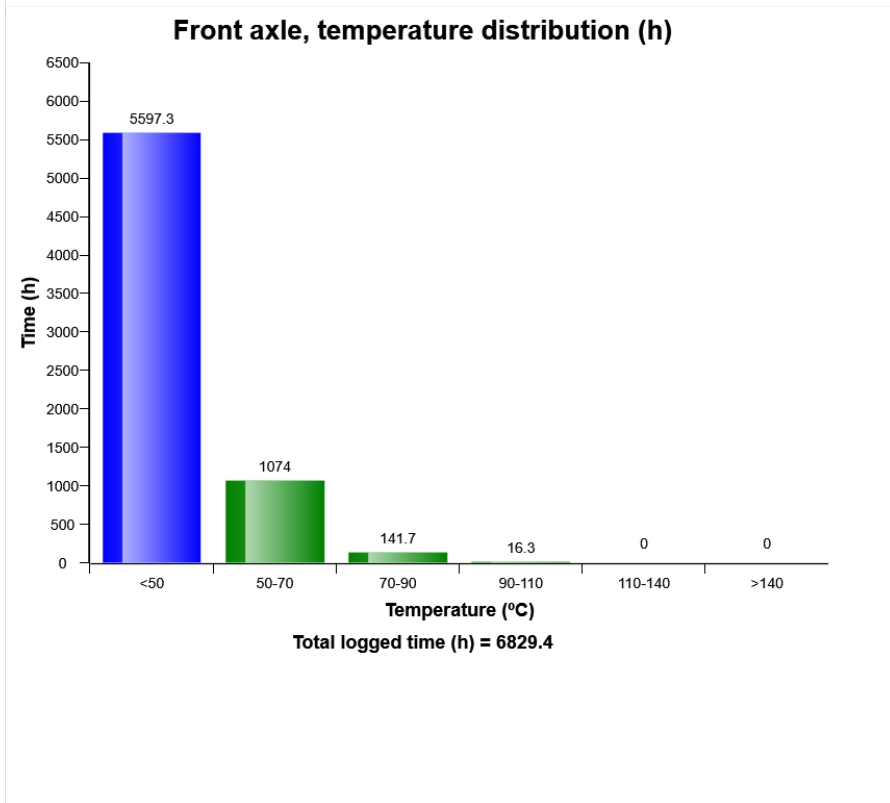
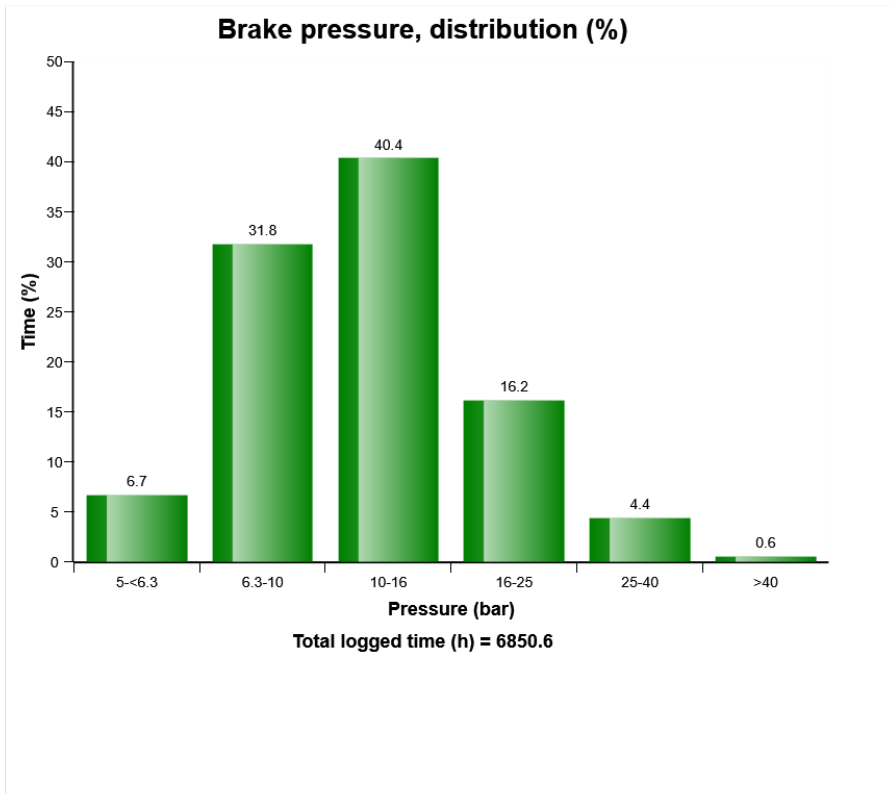
Op hours	Year	Month	Day	Hour	Minute	Duration (sec)	Extreme (bar)
0	2000	0	0	0	0	0	0.0
0	2000	0	0	0	0	0	0.0
0	2000	0	0	0	0	0	0.0
0	2000	0	0	0	0	0	0.0
0	2000	0	0	0	0	0	0.0
0	2000	0	0	0	0	0	0.0
0	2000	0	0	0	0	0	0.0
0	2000	0	0	0	0	0	0.0
0	2000	0	0	0	0	0	0.0
0	2000	0	0	0	0	0	0.0
0	2000	0	0	0	0	0	0.0
0	2000	0	0	0	0	0	0.0
0	2000	0	0	0	0	0	0.0
0	2000	0	0	0	0	0	0.0
0	2000	0	0	0	0	0	0.0
0	2000	0	0	0	0	0	0.0
0	2000	0	0	0	0	0	0.0
0	2000	0	0	0	0	0	0.0
0	2000	0	0	0	0	0	0.0
0	2000	0	0	0	0	0	0.0
0	2000	0	0	0	0	0	0.0
0	2000	0	0	0	0	0	0.0
0	2000	0	0	0	0	0	0.0
0	2000	0	0	0	0	0	0.0
0	2000	0	0	0	0	0	0.0
0	2000	0	0	0	0	0	0.0
0	2000	0	0	0	0	0	0.0



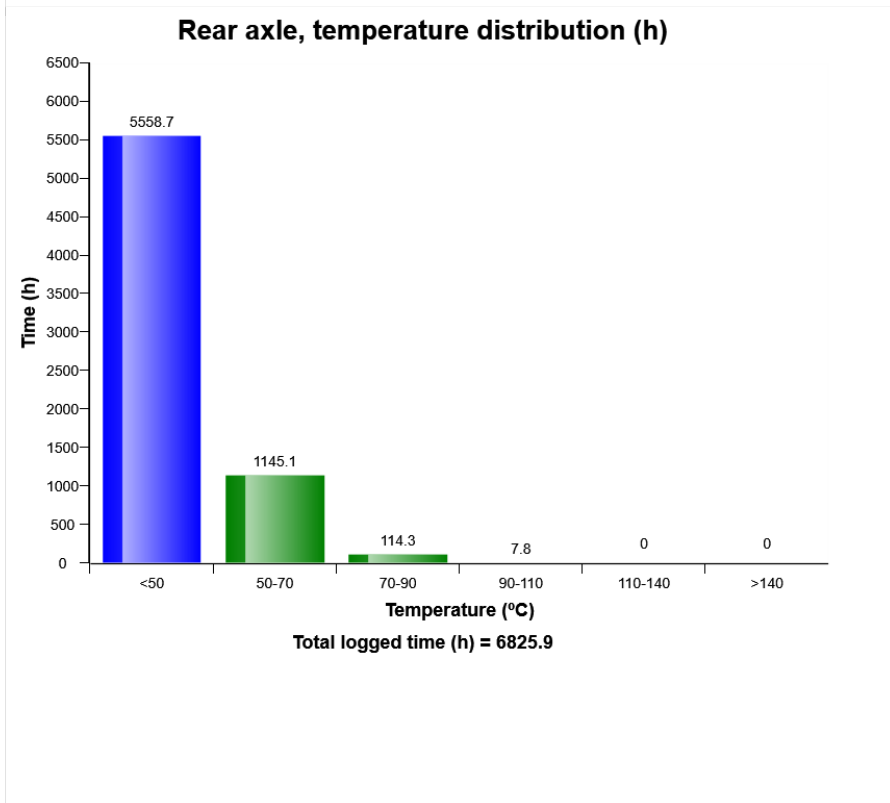
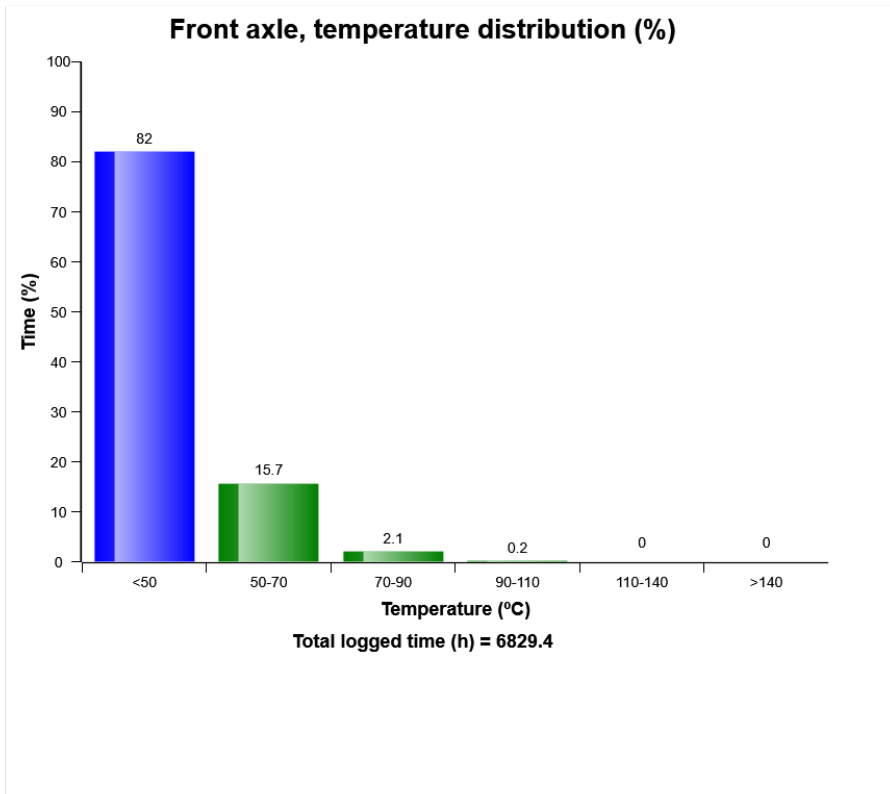
Machine model	SerialNo	Operating Hours	Reading Date
L90G	617156	6891.2	15/04/2019



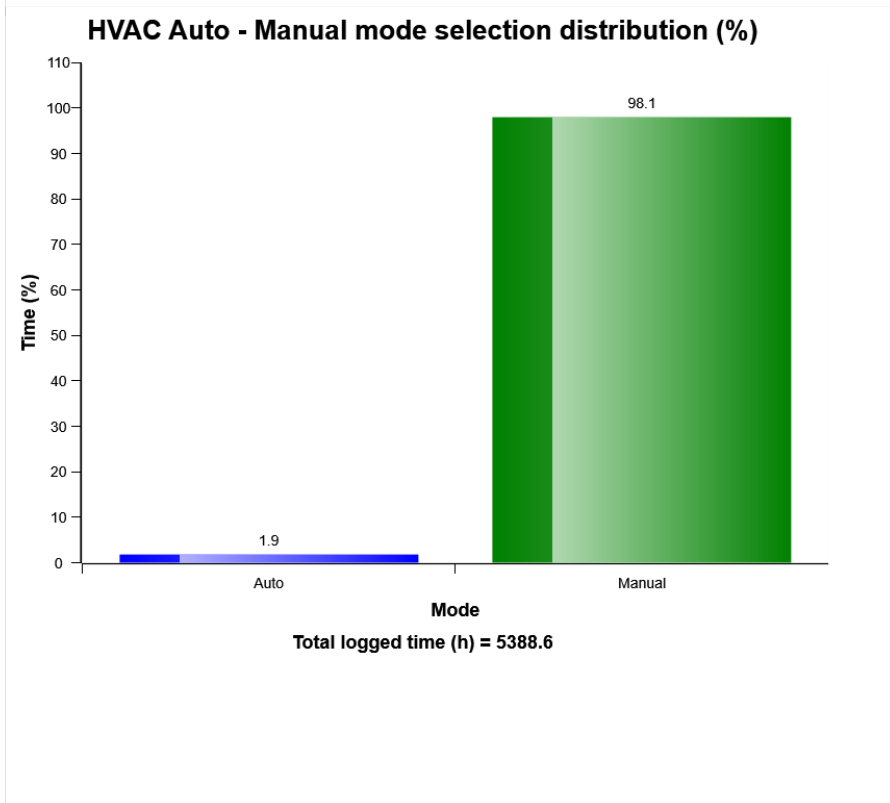
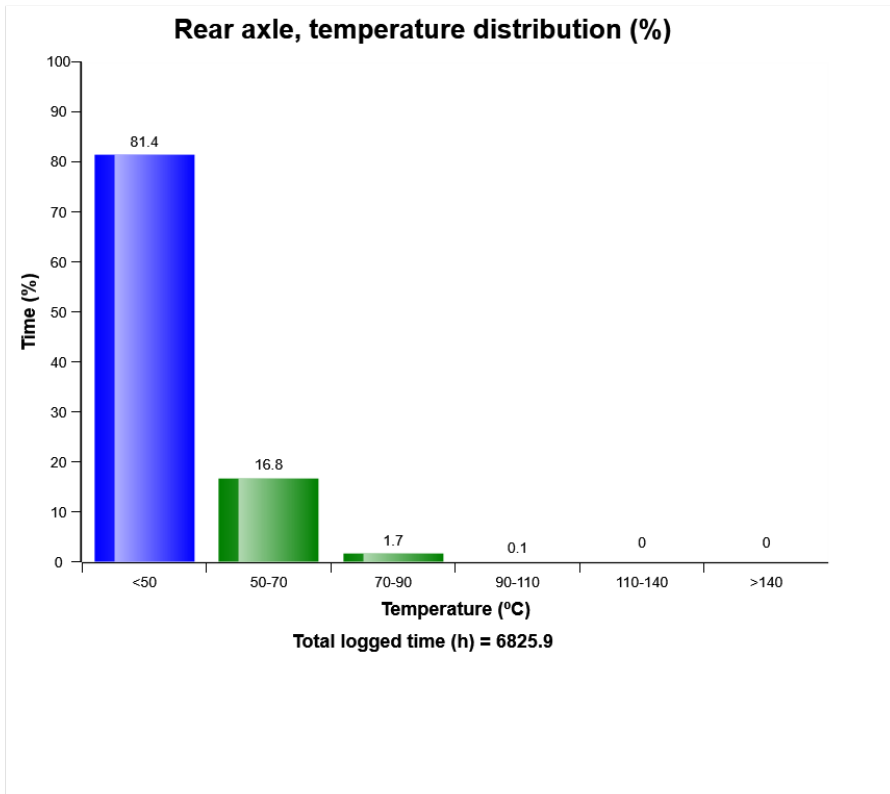
Machine model	SerialNo	Operating Hours	Reading Date
L90G	617156	6891.2	15/04/2019



Machine model	SerialNo	Operating Hours	Reading Date
L90G	617156	6891.2	15/04/2019

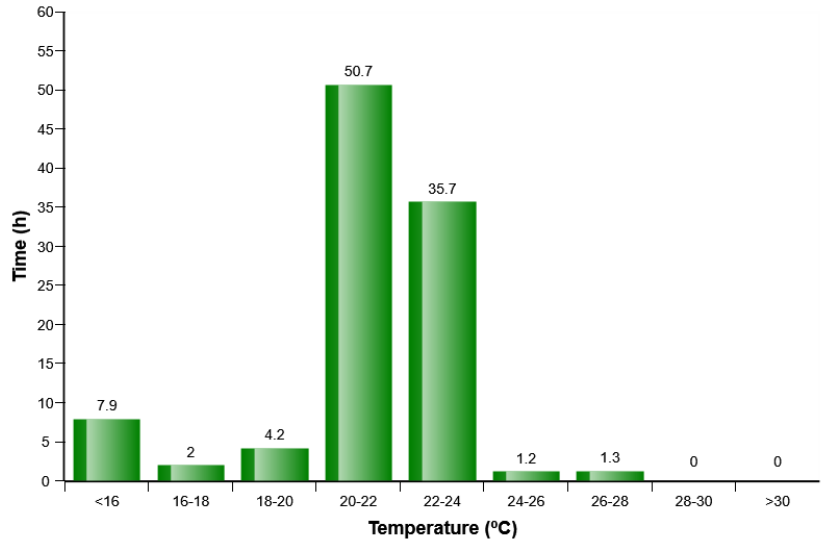


Machine model	SerialNo	Operating Hours	Reading Date
L90G	617156	6891.2	15/04/2019

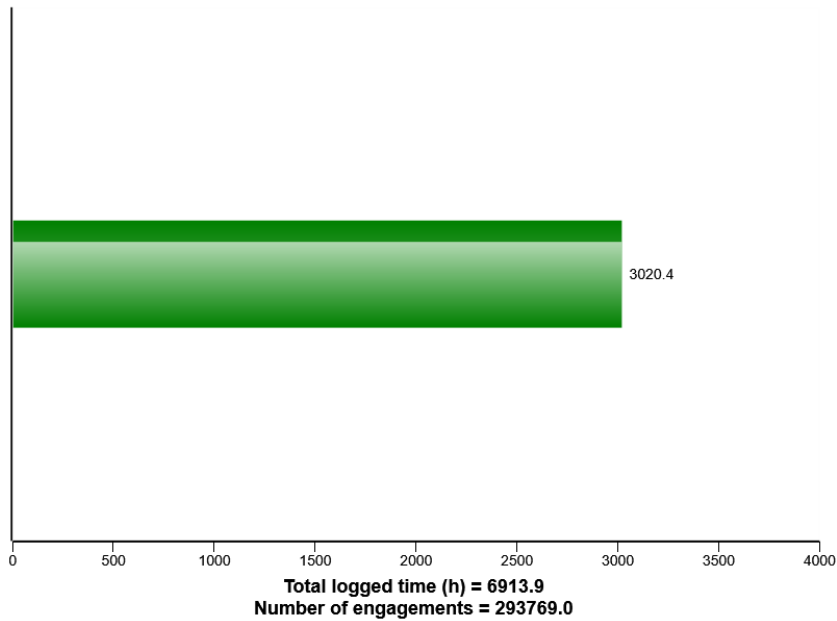


Machine model	SerialNo	Operating Hours	Reading Date
L90G	617156	6891.2	15/04/2019

HVAC air temperature setting in auto control mode distribution (h)



AC Compressor usage



Machine model	SerialNo	Operating Hours	Reading Date
L90G	617156	6891.2	15/04/2019

AC High Pressure
Total number of occurrences = 47

Op hours	Year	Month	Day	Hour	Minute	Duration (sec)	Extreme (° C)
3819	2016	8	4	15	37	41	37
3873	2016	8	12	16	38	36	35
3896	2016	8	24	12	37	61	36
3936	2016	9	1	13	9	18	35
3939	2016	9	1	16	11	31	36
3940	2016	9	1	17	12	27	36
4175	2016	10	18	16	37	32	32
5125	2017	7	1	11	47	56	32
5127	2017	7	1	14	36	94	35
5127	2017	7	1	14	6	47	35
5248	2017	7	24	16	0	106	39
5255	2017	7	25	11	49	38	33
5278	2017	7	27	17	26	47	37
5287	2017	7	28	16	24	63	39
6715	2018	5	11	15	20	193	32
6715	2018	5	11	15	16	103	32
6716	2018	5	11	15	28	183	33
6716	2018	5	11	15	26	37	32
6768	2018	5	18	17	9	30	36
6860	2018	5	31	19	0	15	35



Machine model	SerialNo	Operating Hours	Reading Date
L90G	617156	6891.2	15/04/2019

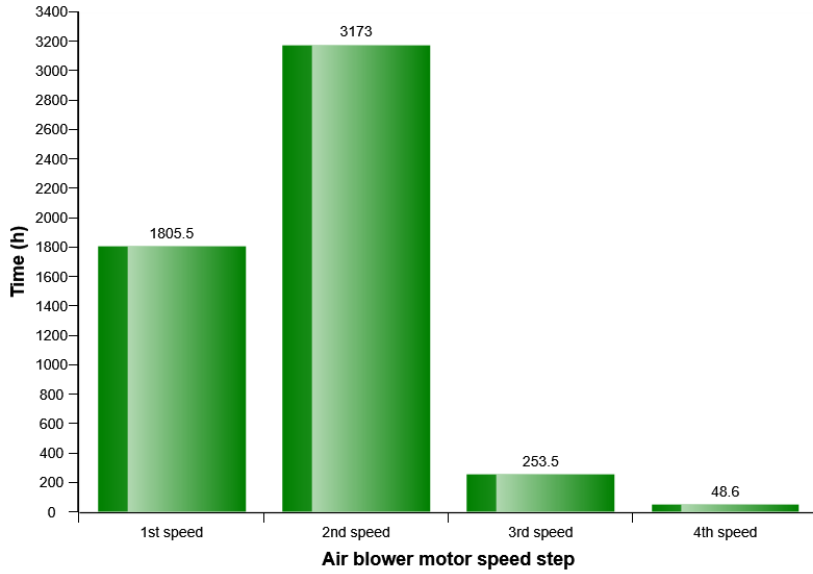
**AC Boiling Protection
Number of engagements = 0**

Op hours	Year	Month	Day	Hour	Minute	Duration (sec)	Extreme (° C)
0	2000	0	0	0	0	0	0
0	2000	0	0	0	0	0	0
0	2000	0	0	0	0	0	0
0	2000	0	0	0	0	0	0
0	2000	0	0	0	0	0	0
0	2000	0	0	0	0	0	0
0	2000	0	0	0	0	0	0
0	2000	0	0	0	0	0	0
0	2000	0	0	0	0	0	0
0	2000	0	0	0	0	0	0
0	2000	0	0	0	0	0	0
0	2000	0	0	0	0	0	0
0	2000	0	0	0	0	0	0
0	2000	0	0	0	0	0	0
0	2000	0	0	0	0	0	0
0	2000	0	0	0	0	0	0
0	2000	0	0	0	0	0	0
0	2000	0	0	0	0	0	0
0	2000	0	0	0	0	0	0
0	2000	0	0	0	0	0	0
0	2000	0	0	0	0	0	0
0	2000	0	0	0	0	0	0
0	2000	0	0	0	0	0	0

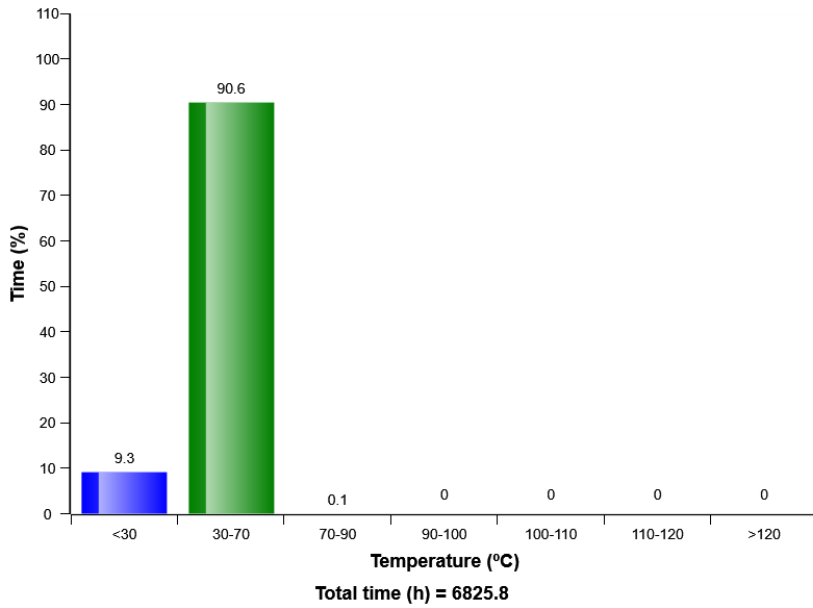


Machine model	SerialNo	Operating Hours	Reading Date
L90G	617156	6891.2	15/04/2019

HVAC air blower motor speed in manual mode distribution (h)



Hydraulic oil, temperature distribution (%)



Machine model	SerialNo	Operating Hours	Reading Date
L90G	617156	6891.2	15/04/2019

